



VEHICLE CLUB
Wellington

Cross Country Chronicle

September 2014



The Official Magazine of
The Cross Country Vehicle Club (Wellington) Inc
PO Box 38-762, Te Puni 5045, Wellington

The club meets at 7:30pm on the 2nd Wednesday of each month at the
Petone Working Men's Club



Time for a holiday in Mooloolaba Pool OR Beach



Air Conditioned Fully Self Contained Apartments located opposite the Famous Mooloolaba Beach with a short stroll to all the Cafes, Restaurants and Shops on Mooloolaba Esplanade.

137 Mooloolaba Esplanade, Mooloolaba, Queensland

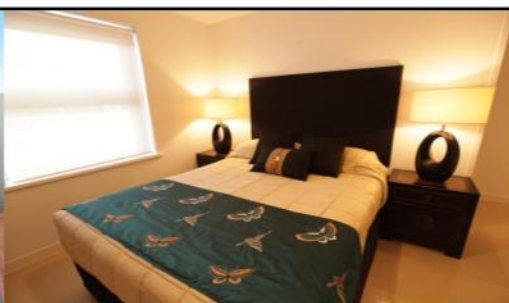
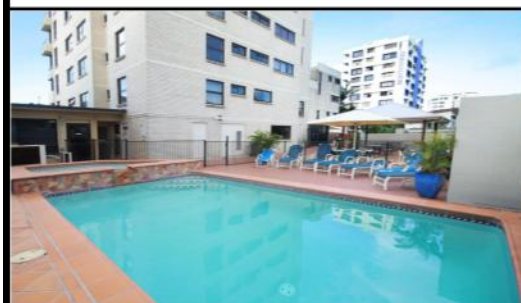
www.windwardapartments.com.au info@windwardapartments.com.au

FREE COOKED BREAKFAST

and Stay for 3 Nights, Pay for 2

Check out our web site or

Email Larry on info@windwardapartments.com.au



WHEN HELP IS NEEDED

Should any members fail to return from any outing, four wheel drive or otherwise, whether as a club member or as a private individual, the following person/s should be contacted in the first instance:

Anthony Reid 973 8262 or 027 273 6579 or 021 061 1831

Morris Jury 566 6197 or 021 629 600

Table of Contents

| | |
|-------|----------------------------------|
| Cover | Mid-Winter Meander July 2014 |
| P. 3 | Help, Index, Safety Inspectors |
| P. 4 | Upcoming National Events |
| P. 7 | Club Truck 4x4 Challenge Round 1 |
| P. 10 | Akatarawa 16 August 2014 |
| P. 12 | Mid-Winter Meander July 2014 |
| P. 18 | Presidents Piece |
| P. 19 | Club Truck 4x4 Challenge Round 2 |
| P. 22 | 2014 Club Awards recipients |
| P. 22 | Deadwood Safari 2015 Update |
| P. 23 | FnF Discount Fuel Card |
| P. 26 | Club Trips - Sept, Oct & Nov |
| P. 27 | Trip Categories |

Vehicle Inspectors

Dayal Landy

Gold Coast Mechanical
2 Epiha St, Paraparaumu
Ph. 04 902 9244

Antony Hargreaves

Epuni Motors 1987 Ltd
2 - 6 Hawkins St, Lower Hutt
Ph. 04 569 3485

Dave Bowler

Pete Beckett

Bowler Motors Ltd
11 Raiha St, Porirua
Ph. 04 237 7251

Grant Guy

G Guy Motors
61-63 Thorndon Quay, Wellington
Ph. 04 472 2020

Carl Furniss

Wellington 4WD Specialists
26 Hawkins Street, Lower Hutt
Ph. 04 976 5325

Shane & Carl

Mendoza Mechanical
34 Goodshed Road, Upper Hutt
Ph. 04 527 7274

NB: Please remember to call and make an appointment before turning up for an inspection!



MAGAZINE CONTRIBUTIONS

This is your magazine so it can only be as good as the contributions you make!! We need any articles, trip reports, technical items, "How-to's", etc to be in the hands of the editor by the end of each calendar month.
Please email to newsletter@ccvc.org.nz or post to 34a Hine Rd, Wainuiomata or fax to 04 914 8366.

DISCLAIMER: The opinions expressed in this magazine are those of the contributors and not necessarily those of the club, it's executive or committee members. Publication of maintenance techniques or mechanical modifications should be weighed against generally accepted procedures and the Club should not be considered an authority in this area.
The mention of products, service procedures or service organisations herein does not constitute endorsement by the Club, the Cross Country Chronicle or it's Editor.

Upcoming National Events

Sept 13 - Desert Defenders Winter Woolies Trip

Hosted by Desert Defenders Off Road Club and supported by Achilles Radials. A Winter 4WD trip again in the NZDF zones along the Desert Road. Limited to 110 participants. We are still in the planning stages, but tentatively we hope to divide trip into 3 groups of 40 with sightseers and shinys in one group and those wanting more of a challenge in the other two. All vehicles to be equipped with the following; seat belts for all passengers; rated tow hooks; approved recovery strap; spade; mud tyres or tyres with medium to excellent tread for off roading (we suggest a good condition more aggressive tyre with at least 50% tread life left), fire extinguisher 1kg AEB – dry powder, first aid kit. Overnight camping and hot showers available. Costs \$100 per truck, plus options for hearty homemade dinners, lunch and breakfasts as in previous years. Day membership will be required for non NZFWDA members. To register contact DDORC Secretary - Kandy Mott kandy@motts.co.nz

Sept 14 - 4x4 Charity Food Drive Gymkhana

Hosted by Waikato 4WD Club/Cozzie Four Wheelers/Jeep Club supporting the Salvation Army. Held at Rotorangi (Cambridge). A free breakfast is generously being provided by Morgan & Jayne at Waikato 4x4 from 7:30 till 9:00 in Cambridge and we will convoy out to the property at Horahora for a 10am start. Cost is \$10 per driver plus a non-perishable food donation for the Salvation Army. The event consists of a number of hazards including a speed section, hill climb and various other fun challenges. Three classes will be catered for: Stock 4x4 (with A/T's or MUDs); Modified 4x4's; Competition/trailer (non road legal) 4x4's. Helmets and seat belts are required and a roll bar for soft top vehicles. Day membership will be required for non NZ4WD members. Spectators welcome (gold coin donation please). Refreshments will be available. For further information contact: Bryan Williams Phone 021931360 or Dom Barnes phone 0278233018.

Oct 03-05: Mainland Winch Challenge Round 5

Round 5 of the Mainland Winch Challenge Series to be held at Makihikihi, Timaru. For more details see www.mainlandwinchchallenges.co.nz

Oct 05: Muriwai Beach Clean Up

Annual Muriwai Beach clean-up by Auckland 4WD and Land Rover Owners Auckland clubs in association with Auckland Council. Start at 10.00am with BBQ afterwards. For further details see the What's On page at www.auckland4wd.org.nz

Oct 09: Off Road Racing Matamata

Northern Series Round 3 short course and Enduro at Matamata hosted by Bay Offroad Racing Club see www.oranz.co.nz

Oct 17-19: Manukau Winch Challenge

Manukau Winch Challenge, to be held in the Onewhero area. Further details to come, see www.manukau4wd.org.nz or email themudman2@icloud.com or more details.

Oct 25: Off Road Racing Championship Finals

Short course and Enduro at West Melton, Christchurch hosted by Canterbury Offroad Racing Club see www.oranz.co.nz

Nov 02: The Rosehill College Fundraising Safari

Hosted by Manukau 4WD Club. This is a unique opportunity to visit the south coast of the Manukau Harbour, an area that is normally off limits to the public while enjoying your 4WD vehicle in its natural environment. This area has never before been open to the public and the trip is unlikely to be repeated. The event is a fund raising event to raise funds to help send a group of Rosehill College students on a World Challenge expedition to Vietnam. The Safari will start near Karaka, 30Km south of the centre of Auckland and will follow a route through several farms, along the beach, paddocks, bush, mud, some tracks specially built for this event. Parts of the route are below the high tide mark on a hard surface. Historical information and activities for the kids will be provided on route. The route will be suitable for all high clearance 4WD vehicles with optional more challenging sections for more capable vehicles and drivers. Numbers are limited. Places will be allocated on a first come, first served basis. Further information including exact starting point and time will be supplied when your entry is received. Costs \$85.00 per vehicle (including morning tea). Entrants who are not members of a New Zealand Four Wheel Drive Association (NZFWDA) affiliated club will be required to become a day member of Manukau 4 Wheel Drive Club for an additional day member fee of \$5.00. For further information and entry form contact Tony or Nathan on 09 298 3194 or email rosehillsafari@gmail.com.

Nov 14-16: NZ1 Winch Challenge

Based in Christchurch and is billed as the biggest event of the year. Friday is scrutineering and a vehicle display for the public. The public will get to see the vehicles compete on a man-made course under lights in central Christchurch. Saturday is another public day on the outskirts of Christchurch with Sunday a 1 stage with a mass start taking 204 hours which will test endurance of teams. Refer to www.mainlandwinchchallenges.co.nz for full details.

Nov 15 & Nov 29: 42 Traverse Cut Back

Planning is underway for a 'working bee' on the 42 Traverse in the Tongariro Forest. Two weekends are being organised to provide options. Save one to keep this route open.

Some details in this column appear courtesy of Cathy Parker, publisher of the New Zealand 4WD and Sportvehicles magazine. Potential participants should contact the event organiser; CCVC cannot take responsibility for any changes or inadvertent inaccuracies.

Sue's Office Services

.... - - -

Need rescuing? . . . SOS

Sue Parfitt
7 Jasons Place
Churton Park
Wellington

Mobile: 0211810401

Email: sueparfitt7@gmail.com

Specialising in all Bookkeeping
Debtors, Creditors, wages, tax etc

G. Guy Motors

4WD SPECIALISTS NZ



CLUB RADIO CALL SIGNS

The Club uses a series of radio call signs in the Kxxx series to meet our licence requirements. Once you get on a trip you soon know what call sign is tail end charlie etc for the day. But basically if you don't yet have a Call Sign you are not authorised to use the Club radio licence.

Call signs are available to financial members on request to database@ccvc.org.nz

So if you have purchased a suitable radio for CCVC use, make sure you get a call sign allocated.

Upper Hutt

Tyres & Batteries

Opposite Railway Station, Princes St, UH

.....

Tyres
Wheel Alignment
Batteries

Nitrogen Tyre Filling

Finance & Laybuy
Options Available

528 8836

CCVC Life Members

| | | | | |
|------------------------|----------------------|------------------------|----------------|---------------------------|
| Tom Adams | Graham Barr | George Bean (Deceased) | Leith Bean | Peter Boniface (Deceased) |
| Stuart Brown | Andy Cockroft | Owen Farghar | Mike Gall | John Hughes |
| Bob Jeffery (Deceased) | Heather Jeffery | Ron Johnson | Steve Lacey | Colin Landy |
| Phil Lewton | Vern Lill (Deceased) | Bruce Mulhare | Raynor Mulhare | Ron Oliver (Deceased) |
| Peter Osborne | Ross Perkins | Grant Purdie | Tony Street | Ron Wadham |

Central Zone Club Truck 4x4 Challenge

Register for Round 1

hosted by the Valley 4WD Club

Judds Farm

565 Haywards Hill Road

Porirua – Lower Hutt

Opposite Brittons House Movers

26th October 2014

Scrutineering: 8:30 am to 9:30 am

Drivers Briefing: 9:45 am

Start Time: 10:00 am

Entry Fee: \$20 per vehicle (payable on the day)

Camping Available on site: from 2:00 pm on Saturday 25 October 2014

camping fee \$5.00 per person BBQ Tea on Saturday night for campers

BBQ Lunch: free of charge for competitors on 26 October 2014

Three Simple Classes

Basic, Limited Modified and Modified

Your Vehicle Must be Warranted and Registered!!

Helmets Must be Worn!!

Register Now - Send your Entry to:

Brent Samson

Valley 4WD Club

P O Box 51-034

Tawa

Wellington 5249

Email: jen_brent@xtra.co.nz

Ph: 021 478 633

(you will be provided with a map to the site when you are sent your entry acceptance)

Registrations Close 5:00 pm on 18 October 2014

2014 / 2015 CENTRAL ZONE CLUB TRUCK CHALLENGE

Round 1

Hosted By Valley 4wd Club

Registration and Indemnity Form

This form may be filled out and emailed back

NAME:

ADDRESS:

.....

PHONE NO: (.....) OR (.....)

E-MAIL:

CLUB:

VEHICLE MAKE:

REGISTRATION NO:

| | | | | |
|----------------|---------------------------|----------|------------------|----------|
| VEHICLE CLASS: | <i>(circle/tick one)</i> | BASIC | LIMITED MODIFIED | MODIFIED |
| | <i>(select/ tick one)</i> | HARD TOP | SOFT TOP | |

Indemnity

It is acknowledged, declared and accepted that it is a condition of entry to this event that you enter this event at your own risk. All persons having any connection to the promotion, organisation, and/ or the running of the event, including and not limited to the New Zealand Four Wheel Drive Association, host club(s), land owner(s) or lease(s), will be ABSOLVED FROM ALL LIABILITY or responsibility for any injury to any person(s), damage or loss of property incurred during the event.

Declaration

I (the under signed) hereby declare that I possess the standard of competence to enter this event and do not suffer from any disability that may detrimentally affect my control of my vehicle. Further, at all times, I take full responsibility for the conduct of and safety of any other person in my vehicle. I also agree that the decisions as to eligibility, conduct, participation, scoring or any other matters relating to the running of the event, are the sole discretion of the organisers and agree to be bound by them.

Team Members : *(Please list – can be added to on the day)*

.....

.....

.....

Signature:

(needs to be signed at scrutineering if emailed)

Date:

Name: *(Printed)*

SNATCH MASTER

high elongation nylon recovery straps

Minimum breaking load 8,000 Kgs

Offers similar elongation to nylon rope, but requires less storage space.

Described by users in trials as 'magic, the best product I have ever used !'

100% New Zealand made

Bring in your club membership card and receive 15% discount off our Snatch Strops, Shackles and Chains.

Standard lengths 6.0 metres & 9.0 metres with special lengths manufactured to order in either our Auckland or Christchurch factories.

BRIDON

Incorporating

Branches throughout New Zealand
Sales and Service

Free Phone 0508 BRIDON (274366)

Wellington Branch

2 Udy St, Petone 04 568 4384

COOKES GOUROCK



Grant Uridge - Plus4 Insurance Solutions

- for insurance that pays out at claims time

Grant realises that many people enjoy talking to insurance brokers as much as they enjoy a visit to the dentist!

But at least with Grant we can talk about the slips down Odlins Road or what's the best winch to have!

But getting the most competitive premiums, quality policy wordings and best products for life, health, income and trauma insurance can save you hundreds or thousands of dollars over time.

While Grant Uridge at Plus4 cannot guarantee every claim is paid. He will make sure that you

know what you are covered for and, in the event that there is a problem, will go the extra mile to get it sorted.

Grant makes sure that you have sufficient cover, at the best prices, so that if the unthinkable happens, you and your family can carry on and avoid a financial catastrophe.

Remember, insurance is all about the claim.

For insurance from someone who will talk your language talk to Grant Uridge,
027 448 8689, 04 976 1099
or grant@plus4.co.nz



Every CCVC member taking insurance with Grant receives a free emergency kit

A copy of Grant's Disclosure Statement is available free of charge.

An Akatarawa Trip Report

Saturday 16th August saw a group of twenty trucks head into the Akatarawas. The quality of leadership was immediately in evidence as the trip leader chose the one sunny spot to hold the trip briefing. Morris was the lead vehicle so he was kept busy clearing the way through fallen trees.



Leaving the way clear for the rest of us to have fun!



The track was very slippery in places and one or two were a little challenged, allowing some of us extra time for coffee breaks – Rabbit was particularly appreciative.



The fence line was reached, lunch eaten, and time for a play amongst the trees.

And it didn't really matter if you got stuck...



...there was always a trusty truck there to help pull you



out!

Some of you sceptics might need photographic proof that it really was the Land Rover rescuing the Pajero.

Toyotas weren't invulnerable either, as Big Red found out after an



argument with a large rock. A broken CV left him with two wheel drive only, and a Pajero came to the rescue with an interesting hook up. I should point out, however, that the Toyota made it back out with just two wheel drive.

Despite the hassles, a lot of fun was had and we made it through the trees to a lovely view of Kapiti Island.



As we approached the end of the trip, Morris was getting some interesting readings from his temperature gauge and a quick look under the bonnet revealed a broken 'T' junction in his water system. No problem but there were words along the lines of, "Photographs of this could leave you stranded in the forest." Hopefully that Land Rover would come to my rescue.



A great trip, guys, I hope the trucks were easily sorted.

The Rabbit



Mid-Winter Meander around St Arnaud and Golden Bay

Nine Trucks arrived in St Arnaud in dribs and drabs on Friday and Saturday 11th and 12th of July. We set ourselves up in 2 houses there until Monday 14 July. Our party was made up as follows:

Mr T – Murray T
Enterprise – Ross and Michelle
Tigga – Grant, Lisa, Cameron and Sydnie
Dark Knight – Murray and Glennys
Polaris – Howard
Orange Peel – Ian and Bernice
White Knight – Ken and Kris-Ann
Boris – John P
Blue Peter – Peter and Jenny

Mid-Winter Meander - Saturday 12 July 2014

Those present on Saturday morning, Dark Knight, Enterprise, Tigga, Mr T and a Suzuki (who, for obvious reasons, was named Polaris at a later date) set off at 9.15am on a fine sunny morning for the Leatham Conservation area. We turned into Branch River Road and followed a good road, passing the Branch River weir intake which had a reasonable amount of water flowing over it. The area here was well covered with forestry trees. We soon got to the fork where the Leatham River joined the Branch River. We inspected the swing bridge and DOC information board, aired down and then set off into the Leatham Conservation area. At the first stream crossing, Boulder Stream, Enterprise tested the waters which looked quite generous. He gave it the tick of approval so the rest followed. We were now travelling up a wide river valley covered on both sides with mixed beech and podocarp and surrounded with high peaks of alpine tussock tops, and scree slopes.



Just before we got to Cave Hut (a standard DOC hut as were all the huts in the valley) for morning tea we passed an airstrip which apparently was used for fertiliser operations. Morning tea over, we continued up the river, still on a good road, across another OK stream crossing and past Barber Hut. As we went on the road deteriorated slightly and the stream crossings became more challenging, especially for little Suzukis, but we all arrived safely at Bottom Gordon hut for lunch at 12 noon. This was the end of the driving road. From here a walking track continued up the valley.



After lunch we proceeded back down the road, but on one of the deeper river crossings little Suzuki did a bit of power drifting before getting its feet back on the bottom. Hence it has now been named Polaris. On we went, past Barber Hut and Cave Hut until we got to Boulder Stream. We turned right up Boulder Stream on a track with many slushy, muddy, groovy

(Continued on page 13)

(Continued from page 12)

puddles. Tigga was in his element – some kids just can't resist mud!! We made a very lumpy stream crossing at Boulder forks, continued up the track a little and arrived at Boulder Forks Hut – 2 huts, 1 old and 1 new. Near the hut we found a memorial to Matthew David Harper who died in 2005 aged 16 – a young man who obviously loved hunting, fishing and 4WD driving. It was great to see that the mementoes that had been put on the memorial had been left untouched.

There were lots of good photo opportunities around the hut which many took advantage of but the question needs to be asked – "Who was it who appeared to get caught short while innocently posing for a trip photo and who was the someone who took such enterprising action?"



We returned back down to the river, with Tigga once again puddling uncontrollably in the mud. Once back on the road we headed for home. Part way down Enterprise got a bit bored and decided to go for a roll in the hay. A little bit of coaxing from Tigga and the other trucks' people got him to get back up, keep calm and carry on. We proceeded without further ado and got back to our houses to greet the rest of our party where we discussed today's happenings and tomorrow's hopes.

Mid-Winter Meander - Sunday 13 July 2014

With the rest of the trucks now in tow, we all set out about 8.30am for the Rainbow Valley. The overnight rain had stopped and the heavy mist was clearing as the sun started to peep through. First stop was the ski field carpark, but unfortunately being without chains we were not allowed to go up to the skifield. We were soon off again up the road, stopped at the bridge over St Ronans Stream for a look at the deep chasm below, then moved on for morning tea at a batch originally built by the Electricity Dept but now, being privately owned, is hired out. Sun was now beaming on the snow-covered tops around us as we continued on. We crossed over the long bridge just below the Rainbow/Waiau confluence and carried on to Hell's Gate – a rocky gorge in the upper reaches of the Waiau. No problems were encountered on the scree slopes and we continued on past Cold Water camping area, over an open scree slope and crossed through the boundary gate from the Rainbow Station into the Molesworth Station. Shortly after this we turned left to the Lake Sledgemere information centre. There is a road from here through to the Molesworth Road but it is not usually accessible to the public. We

had lunch at the DOC sleepout here then moved on up the road. As we climbed higher the bush was replaced by snowgrass. We soon reached Island Saddle which is the watershed between the Wairau and Clarence rivers, and a boundary between Marlborough and Canterbury. We had a quick look at the 6-man DOC hut there.

Over the saddle and down the other side, we soon turned off onto the road into Lake Tennyson, a scenic lake formed behind a glacier-deposited dam of rubble and the origin of the Clarence River. It was now time to return back to base. On the way back, just after passing Cold Water campsite, 5 of

(Continued on page 14)



(Continued from page 13)

the trucks made a little detour to the right along a reasonable road, past 3 or 4 pylons, and into the Rainbow River valley. Our journey was short-lived when we met a locked gate which stopped us from getting across to join the rest of the party at the long bridge. We turned around, back the way we'd come and joined the others at the bridge by the conventional route. From there the journey back home was relatively uneventful. We met up at the big house for a welcome tea of corned beef and veg. Before tea Dark Knight's bonnet was up and there was a bit of poking and engine revving going on to try to pinpoint why he was doing some singing from time to time. More would come of this later in the trip. Tigga went off earlier to Nelson Airport to send his navigator back to Wellington.



Mid-Winter Meander - Monday 14 July 2014

Today the convoy shifted on to Totaranui. Pack-up and cleaning was soon complete and we were on the road by 9.00am. Orange Peel got underway earlier to drop his navigator at Nelson Airport to also go back to Wellington. Two trucks without their highly qualified navigators could be a concern!! We set off towards Nelson and when we got to Glenhope turned left onto the Tadmoor-Glenhope Road. We had a pleasant drive through farms and forestry blocks. It looked as if a significant fire had gone through part of it. The thick mist we started out in gradually lifted and we were soon out into open farmland and sunshine. We passed through the hop growing community of Tadmoor, which had a rather substantial looking school building for such a small settlement, then turned left onto the Motueka Valley Highway. At Woodstock we crossed over the Motueka River and continued up the west bank. After morning tea we turned left into the Graham Valley Road which leads up to the Flora Saddle. We passed by some very interesting lifestyle blocks sporting some rather alternative accommodation structures. A short way up at the bridge we met a road closure so it was turn around and back to square one for lunch.

We were soon away again and met up with Orange Peel who had returned from Nelson. Thanks to his connections and knowledge of transmitter sites, he soon had us proceeding up a steep forestry road on the way up to Mt Campbell. At the top was a tower covered with dishes of all shapes and sizes. The mist and clag we had travelled in lifted and gave us a great view over Motueka and Golden Bay. Some bright red structures down below had us all guessing. On the way back down we diverted onto a side-road. We came across a structure which looked like a collection of amateur repeater masts erected beside a huge rock, on which someone had placed a picnic table – your cup of tea would be on a bit of a lean but other than that the view was good. Enterprise successfully negotiated a nose-dive at the play area and that over, we headed for Motueka. Plenty to do here – food shopping, Repco shopping, drink coffee, and give Polaris a mouth rinse to remove some Leatham Valley mud (apparently at this point Ross's torch hitched a ride with Polaris's underbelly and was retrieved by Orange Peel somewhere around Takaka).

We got underway again and passed the red structures we had seen from atop Mt Campbell – protective covers over hop vines. Up and over windy Takaka Hill we went with a brief stop at the lookout. Once in Takaka we turned off to wind over the gravel road to Totaranui. The slips and rock falls we passed were testament to the deluges the area had recently experienced. We arrived at the homestead about 5.30pm and set up our home for the next 4 or 5 days. Sleeping quarters were in the homestead and a nearby building provided ablution and cooking facilities.

Mid-Winter Meander - Tuesday 15 July 2014

This morning we were up and away early at 8.30am to Whanganui Inlet. The frosty morning was followed by a sunny calm day. We turned into the Whanganui Inlet road about 10am. The Inlet is one of the largest and least modified estuaries in the country. The road is unsealed and narrow in parts. The inlet is surrounded by towering limestone cliffs and native bush with large clumps of Nikau Palms. We travelled over causeways across the small inner inlets which at low tide are mud flats but as we drove along the tide was quite visibly

(Continued on page 15)

(Continued from page 14)

running in. We continued down the road past the Kahurangi Outpost (the old school which is hired out mainly to school groups) and the Mangarakau Swamp Reserve, the largest remaining freshwater wetland in New Zealand. After a pleasant stop for morning tea we reached the first of several river crossing on the road before it reaches the sea. It should be



stressed that the rivers were still quite full from rain over previous days and that it was currently almost high tide. When Enterprise went in to test the waters and found it almost up to his windscreen, everyone else grabbed cameras instead of ignition keys. Once Enterprise made it safely back to our side again, it was mission aborted and the convoy turned back to further investigate the way we had come. It's commendable how well Enterprise performs in rivers when in 2 wheel drive!

As we got near the Outpost, we turned into Snake Creek Road, which borders the swamp and where once flax was harvested and milled for rope making. The

road soon ran into a farm where there was no access, so again we turned around. Next side trip was into Te Hapu Road which goes to a luxury lodge. From the state of the road it was safe to assume patrons to the lodge would probably access it by helicopter. We got glimpses of the lodge on the hilltop in the distance when we got to the private property sign. Again we turned back to the inlet road and carried on to the wharf where we stopped for lunch. The wharf was an interesting place. A barge had been parked up beside it and turned into a wharf extension while the walkway to the outer wharf was underwater at high tide. Plenty of crayfish pots there indicated it got plenty of use but it was a long time since it had enjoyed any TLC.

Dark Knight still had strange noises coming from his engine so Doctor Ross was called to operate. After careful consultation it was decided one of his idler bearings needed an oil injection. His partner Doctor Menzies was able to provide the hypodermic for the procedure and the operation was successfully accomplished.

Lunch and maintenance over, we were back on the road and heading for home, with a short delay as we crawled along behind the grader smoothing the road. Most had a visit into Collingwood for ice-creams etc, then fuel fill-up at Takaka and back over the hill to home.

Mid-Winter Meander - Wednesday 16 July 2014

Another good frost this morning but followed by a beautiful sunny day. We were without Orange Peel this morning as he needed to go into Nelson to retrieve his navigator – his driver can become a bit of a worry if he is too long without his navigator!! Late start this morning at 9.30am. Re-fuel at Takaka (black, not yellow, for diesel), and on our way to the Cobb Valley by 10am. We turned into Aaron Creek Road which led into the Cobb Dam Road and continued up the narrow sealed road beside an impressive gorge in the Takaka River. As we approached the power house we got a view of the penstocks coming down the hill carrying water which is stored in the Cobb dam above at 794 metres in altitude. The water from the dam passes through a tunnel system and two steel penstocks, travelling 4 kilometres to the Power Station. A Pelton Wheel monument on display outside the powerhouse was testament to the degree of frost we had experienced – we removed perfect pelton-cup shaped ice-blocks from it.

We carried on, on gravel road, up through beech forest to Cobb Ridge where we got our first view of the Cobb Dam. The Information Centre up here advised that construction of the Dam started in 1935 and was completed in 1944. The dam site was found to be unsuitable for a concrete dam so an earth dam was constructed. The dam is comprised of a silty gravel core with sandy gravel shoulders and was then the largest of its type in New Zealand and the engineers were at the cutting edge in determining the parameters for its design. We went on down and across the Dam to the carpark then up to the Quarry for a short playtime. Then it was back down and across the Dam to continue up the road to Trilobite Hut. On the way up the good road we passed through an area shaded from the sun which was covered in a hoar frost – a winter wonderland!! We had lunch at the road end at Trilobite Hut then retraced our steps back until we took a side-trip towards a quarry. We

(Continued on page 16)

(Continued from page 15)

came across a wide airstrip – the perfect place for a “Le Mons” competition. Trucks lined up and the starter set them off with a hiss and a roar. Polaris just headed off White Knight as they neared the finish line. Any protests lodged were completely ignored by the officials. From here some returned to the quarry and the rest went down a pylon track. On the way we all had a hunt for Powelliphanta snails. Only some shells were found. The convoy soon regrouped and continued out to the road. Another short side trip was investigated without success, so with that we returned back to home. Another very interesting day over.

Mid-Winter Meander - Thursday 17 July 2014

Another good frost and another lovely sunny day. Sunny Nelson certainly deserves its reputation. Today we were to be treated to a tiki-tour of some historic parts of Takaka by a knowledgeable local, Des. We met him at Collingwood at about 10am and headed towards Bainham. We went up past the Collingwood Settlers Museum and on until we got to the historic Bainham store. This store has been in the same family for 4 generations and originally was the main source of provisions for the community in the area. From 1928 this was their local supermarket, post office, and repairs shop all rolled into one. It has virtually remained unchanged since 1928. We continued on and went up Quartz Range Road towards the Aorere Goldfields. First stop was at the site of the Salisbury footbridge, the remains of which were now resting downstream from the road bridge we were standing on. The historic bridge was built in 1887 and was a lifeline to people working and living on the Quartz Range for 95 years until a road bridge was built in 1982. It was recently washed away in a flood. We continued on to Quartz Range where Des took us onto a private property where there was an old major sluicing area. He told us how water, needed to sluice the area, was brought in from a creek 8 Kms away via water races built by miners from timber brought up by horses from the mill down below. Tramways were also built for transportation of equipment and stores etc and some of these tramways were still apparent as we looked across the fields around and below.

We went back down over Salisbury Bridge and continued up to the road-end, had a look at the carpark at the start of the Heaphy track, then retraced our steps back past the Settlers Museum and turned up the Devils Boots Road. We passed under two large limestone outcrops shaped like a pair of upside-down boots (Devils Boots), continued along the road and stopped for lunch at a farm paddock. Des called us all over to an area that had been a limestone kiln used to make quicklime from seashells and limestone. The limestone rock formed a natural chute for the raw material to be sent down, and a fire down the bottom heated it to convert it to quicklime. Further on down the road he took us to the remains of a Blacksmith's Shop tucked away in the bush. These were all pieces of a once thriving community.



After this we went into the Aorere Goldfields track. The stony track wound around through short stubby manuka until we came to a sign to two caves – Staffords and Ballroom. That meant get out and walk and that's what we did for a short 20 minutes. It was well worth it – especially the Ballroom Cave. Once back in the trucks we continued to the top of the hill where we got a view of Druggan's Dam which was a source of the water for the sluicing operation we had visited earlier. This dam is now the single largest relic still existing on the Aorere goldfields. From here it was all downhill on a slippery, rutty track. The road took

us out through a farmyard to our main road back to Takaka. We said our good-byes and thanks to Des for a very informative trip and as MrT took him home we headed back to base. Another great day's tripping.

Mid-Winter Meander - Friday 18 July 2014

Again a good frost followed by a beautiful sunny day. We got away at 8.30am but left Dark Knight at home for a rest. His funny engine noises had stopped, thanks to his injection a few days ago. Now he was making loud turbo noises so he was left at home to think about it. His people hitched a ride with MrT. This morning we were heading for telephone repeater sites north of Collingwood, courtesy of Orange Peel. These sites – a Telecom and a Vodafone – were on top of two neighboring peaks. Just north of Collingwood we turned left after

(Continued on page 17)

(Continued from page 16)

Marble Creek culvert and drove through a metal works quarry. We continued up the road they use to transport dolomite down from above. Our destination at the top of this road was two bumps, quite close together, with a telecom repeater on one and a Vodafone repeater on the other. These two bumps are known locally as "the Devil's Bum", as we learned yesterday from Des, and apparently captains used to line their ships up between the two bumps to ensure safe passage into Golden Bay. Because there was limited parking at both sites, we split the convoy in two – four to one site and four to the other. After 15-20 minutes we swapped sites. Given the narrow road and tight turning corners, this was quite a technical operation but was carried out to precision by our guides. The views from the top were stunning – Whanganui Inlet, Golden Bay and the full length of Farewell Spit. A notation on one of the repeaters read that it had been struck 26 times by lightning, all the towers we visited were protected by lightning rods and heavy copper earthing straps attached to their legs.

After morning tea the two groups joined up again with the same technical precision used when we swapped sites and as we started back down the road a call came over the radio from our Leader to one of the trucks – "Where are you?". Reply – "Um in the bushes". We were all together when we got to the road so it appears all was well. The convoy now headed towards Farewell Spit. We drove into Puponga Farm Park for a look at the start of the Farewell Spit track, then doubled back along Wharariki Road. A short way along we turned right up towards Pillar Point Lighthouse. Quite bumpy up here, in fact you could say it was bumps with a bit of road. Worth every bit of it though as the views were wonderful. Once again the full spit was visible and even Mt Egmont was popping its head out above the clouds. There was some discussion as to whether there were some whales playing out there in front of us or was it the Tasman Sea coming or going with Cook Strait? Once lunch here was finished, we returned back to Wharariki Road and from here made our own ways back to base.



MrT together with Dark Knight's people did a bit of paper road investigating. Thrown in with that was a visit to Mussel Inn for coffee. An interesting establishment where we were treated to a preview of the evening's musical entertainment. We took a back road from Takaka back towards Tataranui and after a bit of toing and froing around Clifton found Bird Road, a winding gravel road up to Birds Clearing. We managed to miss the two gravel trucks coming down, passed some interesting looking residences and eventually arrived at Birds Clearing. Once again we had panoramic views.

(Continued on page 18)



Presidents Piece - September 2014

The days are getting longer, warmer and drier..... It's a great time to start thinking about what trips you are going to come on between now and Xmas. It is also the time to start that spring maintenance on your vehicle(s). Check the brakes, bushes, seals and especially the winch (if you have one) as there's nothing worse than heading out on that trip only to have a breakdown and slow down the whole trip. Also please make sure you have all had your vehicle down to one of our inspectors for the latest inspection sticker for this year.

Club Champs start this October, with round 1 to be held at Colin James's farm in Whitemans Valley. These events are a great way to learn more about how your vehicle handles around a tight and tricky course. The great thing about the Club Champs is the fact you can walk the course first, talk about it with your fellow members, and then give it a go in a controlled and safe environment; or move on to the next hazard if it doesn't float your boat. Support your Competition Officer and his helpers by turning up on the day and competing with the best and the worst of them ! Remember..... you could win a trip to the Gold Coast.

We have our "Keep New Zealand Clean" project coming up this next weekend around the coast from Eastbourne. These projects out in the Community are very important for the image of 4WD'ing, as we need to be seen as responsible members of the wider Community, whether it is giving back to the environment by way of cleaning up the beaches, or planting erosion dunes on the south coast, or donating funds to the likes of Ronald Macdonald House. All of these put our Club and 4WD'ing into the realms of "Responsible Citizens of Society" and people who should be listened to around issues that may arise that impact our sport.

I suppose that's a subtle way of saying.... "I hope to see you at Burdans Gate this coming Sunday" !! The more we have there, the faster we finish.

President Charles



(Continued from page 17)

We retraced our steps back down and were soon back in Clifton. A short way along the road we came across a sign to Grove Scenic Reserve. From here a 30 minute walk took us through an amazing area characterised by massive rata trees growing out of curiously shaped limestone outcrops. The track winds past a number of these outcrops, as well as Nikau Palms and native ferns, then goes through a narrow canyon out to a lookout over the surrounding countryside. The roots of the rata trees that hang down many of the outcrops create an eerie atmosphere. You almost expect to see a Dinosaur pop its head out. This is a must see for anyone in the area.

From here it was straight home without any further ado. After tea a birthday cake was paraded out, accompanied by party blowers with loud whistles, and a hearty rendition of Happy Birthday – John P was turning 60. A lot of fun and laughter had gone in to the manufacture of the cake so a good time was had by all.

This pretty much heralded the end of our trip. Next day and the day after people would be moving off in their own time to catch a ferry or catch up with family or friends. All agreed it had been a great winter meandering - good tracks, good views, interesting places, good weather, good company and good food. A big thank you goes to Murray T for organising us and our food and accommodation (as always no mean feat), Ian for some interesting side trips, Ross for checking out the gnarly bits and Sydnie and Cameron so some yummy desserts.

Scribe Glennys
Photos Murray T

CENTRAL ZONE

www.czetc.org.nz



REGISTER FOR ROUND 2

1ST NOVEMBER 2014

This is to be held at 133 Elsham Rd
Lepperton

Camping is available on the property
Friday and Saturday nights
Bring your own food and gear for camping,
BBQ available for cooking

Saturday Night = Pot Luck BBQ Tea
Bring something for the BBQ

Three simple classes:...

Basic, Limited Modified & Modified

YOUR VEHICLE
MUST BE

REGISTERED & WARRANTED!!

HELMETS
MUST BE WORN!!

ROUND 2

REGISTER NOW!!

Shona Stone

Ph: 06) 753 5574 or 027 6329 558

E-mail: alan_shona@xtra.co.nz

SATURDAY

Arrive 8am

Scrutineering:

8.30 - 9.00am

Drivers Brief:

9.15am

Start Time:

After the Briefing

Finish Time

Approx. 4pm

\$20-00 Registration

CLUB TRUCK CHALLENGE

2014/2015 CENTRAL ZONE CLUB TRUCK CHALLENGE

Round 2

Hosted by

MT EGMONT 4WD CLUB

REGISTRATION AND INDEMNITY FORM

This form may be filled out and emailed back

NAME:.....

ADDRESS:.....

.....

.....

PHONE NO:(.....)..... or (.....).....

E-MAIL:.....

CLUB:.....

VEHICLE MAKE:.....

REGISTRATION NO:.....

VEHICLE CLASS: (*circle/tick one*) BASIC LIMITED MODIFIED MODIFIED

HARD TOP SOFT TOP: (select/ tick one)

INDEMNITY

It is acknowledged, declared and accepted that it is a condition of entry to this event that you enter this event at your own risk. All persons having any connection to the promotion, organisation, and/ or the running of the event, including and not limited to the New Zealand Four Wheel Drive Association, host club(s), land owner(s) or lease(s), will be ABSOLVED FROM ALL LIABILITY or responsibility for any injury to any person(s), damage or loss of property incurred during the event.

DECLARATION

I (the under signed) hereby declare that I possess the standard of competence to enter this event and do not suffer from any disability that may detrimentally affect my control of my vehicle.

Further, at all times, I take full responsibility for the conduct of and safety of any other person in my vehicle. I also agree that the decisions as to eligibility, conduct, participation, scoring or any other matters relating to the running of the event, are the sole discretion of the organisers and agree to be bound by them.

Team Members (*Please list*)

.....

.....

.....

Signature: (needs to be signed at scrutineering if emailed)

Name: (Printed)

Date:.....

Jennian Homes builds Man-caves for Real men!



Want to do something new, exciting and adventurous? Talk to Linda today and find out how she can turn your dreams into reality!

Special offer for 4WheelDrivers!

Linda Postma M 021 898 714 E linda.postma@jennian.co.nz



Jennian Homes Wellington

15 John Burke Drive, Aotea,
Wellington

Open Tuesday to Sunday 1 - 4pm

Jennian
HOMES

Your personality Our expertise

LEADING BRAND 4X4 WINCHES & ACCESSORIES



Runva
Performance Winches

EXCLUSIVE LIMITED LIFETIME WARRANTY

Runva Performance Winches. The only winch you will ever need. Competition proven in NZ and around the world year after year.

BEST RANGE - BEST QUALITY - BEST PRICE



PREMIUM AUSTRALIAN MCC 4X4 ACCESSORIES

Winch Bars, Side Bars, Rear Bars, Roll Bars, Side Steps, Roof Trays, Drawer Systems.

MCC is a worldwide supplier of quality products.

WINCH BARS / BUILT IN SPOTLIGHTS - \$1200!!

For more info 021 535 007 | info@winch.co.nz | www.winch.co.nz | www.mcc4x4.co.nz

2014 Awards & Trophy Winners

John Philips Trophy – first modified vehicle club champs – Mark Stockler

Deadwood Cup - best CCVC presented vehicle at Deadwood – Steve Lacey

Bent Conrod - first CCVC vehicle home at Deadwood – Mitchell Seymour

Bob Jeffery Memorial Cup - helping hand – Murray Taylor

John Findlay Award - trip leader of the year – Graeme Millard

Ron Wadham Trophy - first standard vehicle in club champs – Andrew Gee

Presidents Cup - awarded at the discretion of the President – Neil Blackie

Glengary Award – conservation – David Sole

Reporters Award - best trip report for the year – Alan Donaldson

Andrew Farmer Memorial Trophy – most active new member –Ger van Hees

Barbara Blackie Memorial Trophy – most active members partner – Linda Millard

CCVC Off Road Cup – first club vehicle in club champs – Craig Freeman

Grant Kirby Memorial Trophy – inter club events – Andrew Gee

Deadwood Safari Shield – 2nd CCVC vehicle home in Deadwood Brian Howat

Jean Cameron Trophy – manufacturers challenge – Not awarded

Winner of \$1000 Action Tyre voucher – Ger van Hees

Winner of the Club Champs draw staying at Windward Apartments Australia – Bryan Taylor, Bryan has kindly donated the prize back as he won last year. The prize was redrawn at the August club night as was won by - Craig Freeman

Deadwood Safari March 8th 2015 Update

Last month I mentioned how well the planning was going and a couple of things coming up which are crucial to our success.

One of those is getting sponsors for the event - there are gold and silver sponsorship opportunities for only \$250 or \$100 respectively. if you know a business that might consider taking naming rights on a section for this sort of sponsorship or donation of prizes, please let me know so we can ensure we're not doubling up and are providing the right information.

Another is getting volunteers to be sector marshals – lots of Club members have done this in the past. We're looking for other groups to help out as well and if we can get enough then each person will only need to do a half day and can have the other half free to spectate. The Club Champs will be held on 11th October and 30th November and these will be an opportunity to do a number of things – compete in or watch the Club Champs and at the same time to be shown what marshaling is, how easy it is and to have a go. For most Club members marshaling is the only chance to help out and is for just one day.

The plan is to make the Club Champs a great day out with the Club marquee set up, a BBQ lunch provided and well we've got a bit more planning to do, so more detail to come. Three classes are run in the Club Champs and this time they'll all be run so it'll be a big day with lots of action. We really need members to help out with this so please put the dates in your diary and bring the family – four wheel driving without spending the whole day in the truck.

More next month.
Neil Blackie



FnF Fuels
Fuel Card Company
0800 43 83 83



[Home](#) [About](#) [FnF Mobil Card](#) [FnF Caltex Star Card](#) [FnF BP Fuelcard](#) [SKEGGS](#) [NZMCA](#) [Fuel Station Finder](#) [FAQ's](#) [Contact Us](#) [Feedback](#) [FnF News](#)

Competitive discounts

WELCOME TO THE HOME OF FnF FUELS FUEL CARD COMPANY

We are a leading fuelcard provider supplying Mobil, Caltex and BP branded fuel cards to businesses enabling them to purchase discounted fuel at over 900 sites throughout New Zealand.

Pricing is very competitive with generous discounts

- No monthly or annual fees
- Choice of 3 fuel brands (or have all 3)
- Over 900 sites throughout New Zealand
- Competitive discounts
- Unsurpassed customer service
- 0800 number means no toll charges
- Electronic invoicing available
- Up to 6 weeks free credit
- Detailed itemised invoices for greater fleet management control
- Three payment cycle options

FnF MOBIL CARD

Great discounts off the Pump price



[Read More](#)

FnF CALTEX STARCARD

Very competitive Diesel Stop pricing



[Read More](#)

FnF BP FUEL CARD

Extensive network of service stations throughout NZ



[Read More](#)

SEE BELOW FOR MORE EXCLUSIVE OFFERS

SKEGGS FOUNDATION INC.

Contact us to find out more about this exclusive offer



NZ MOTOR CARAVAN ASSOCIATION

Contact us to find out more about this exclusive offer



SUPERGOLD

Contact us to find out more about this exclusive offer



ADDITIONAL CUSTOMER BENEFIT CARD (FOR EXISTING FnF CUSTOMERS ONLY)



THIS FANTASTIC CARD PROVIDES POINT OF SALE DISCOUNTS AT 10 WELL KNOWN SUPPLIERS SUCH AS NOEL LEEMING AND CARTERS.

[Read More](#)

Level 1, 63 Kerikeri Rd, Private Bag 1021, Kerikeri 0245, New Zealand. Ph: 0800 43 83 83 Email: fuels@fnffuels.co.nz Web: www.fnffuels.co.nz

4WD - DISCOUNTED FUEL CARDS EFFECTIVE 01.05.14

| CARD TYPE | DISCOUNTS DIESEL | DISCOUNT PETROL |
|-----------|---|---|
| MOBIL | Diesel <ul style="list-style-type: none">9cpl at Truck Stops & Service Stations | Petrol <ul style="list-style-type: none">9cpl at Truck Stops & Service Stations |
| | The above discounts are available off:- The displayed Mobil PUMP price OR Mobil NATIONAL price OR BOTH | |
| CALTEX | Diesel <ul style="list-style-type: none">7cpl at Truck Stops4.5cpl at Service Stations | Petrol <ul style="list-style-type: none">2.5cpl at Truck Stops4.5cpl at Service Stations |
| | Above discounts are off the displayed PUMP price | |
| BP | Diesel <ul style="list-style-type: none">11cpl at Truck Stops8cpl at Service Stations | Petrol <ul style="list-style-type: none">8cpl at Service Stations |
| | Above discounts are off the BP National price | |
| Fees | <ul style="list-style-type: none">❖ \$10 account opening fee❖ Half a cent per litre transaction fee❖ 50 cents per transaction fee on non-fuel purchases❖ \$6 per card for new / replacement cards – WAIVERED <p>THERE ARE NO MONTHLY OR ANNUAL FEES</p> | |
| Payment | Monthly payments: By Direct Debit on the 20 th of the following month. Fortnightly payments: By Direct Debit on the 14 th & 28 th monthly | |
| Invoices | All invoices & statements will be sent electronically, however paper copies will be available at a cost of \$2 per account, per month. | |

- The above cards can be used throughout New Zealand
- To view sites where our fuel cards are accepted, please visit our website below and click on "Fuel Station Finder".

THIS COULD BE YOUR PAGE!

Go on – step outside your comfort zone and write something for the magazine. Even just a few sentences. You don't have to have been stuck or done anything embarrassing, the rest of the members just like to read your perspective on anything related to the club.

SO WHAT CAN YOU WRITE ABOUT?

How about a trip report? So you enjoyed the trip and would love to share your experiences but are not quite sure who was on the trip or where you actually went.

Call the trip leader and they will give you the details you need to tell your story. It can be as long or short as you want - even a couple of sentences will be well received.

Not sure you want to write a whole report, but want to share that silly / funny incident or dob a friend in? Send a mole report to mole@ccvc.org.nz and it might end up in "The Mole Report", a new section of the club mag.



Writing not your thing?

How about sending some photos for club night. We are keen to have a selection for photos for each trip so here are some guidelines to make it easy for everyone:



Try to pick your best dozen or so photos – we can't show too many on the night so lets make it the best ones.

Photos need to be with me before 8:30pm Monday night. That way I can set them up on Monday night and get them to John on Tuesday night so he can get them ready for Wednesday night.



If you can do so, resize the images to 1152 x 864 pixels (or use a lower resolution setting on your camera). This makes the images small enough to email to david.coxon@xtra.co.nz. Alternatively put your pictures on a CD and call me to arrange to get the CD to me. My contact details are:

463 4263 (w)

567 4501 (home before 8:30)

027 451 0361 (m)



Editorial Ramblings

WANTED: Society Gossip, Scandal, Rumour, and if all else fails, TRIP REPORTS and NEWS! Photos also very welcome

Well I'm back again, gee 10 weeks seems to have flown by pretty quickly but I had an excellent trip. Managed to visit various parts of Canada, Hong Kong, Macau, England, Wales, Scotland, Italy and Greece with brief glimpses of Turkey, Crete and a few of the Greek Islands. But quite a bit to cover in ten weeks, and I have to admit that I was getting tired towards the end, the novelty of living out of a suitcase does wear a bit thin. I don't know if anyone looked at my blog but there is a day by day progress on what I got up to, unfortunately (at least for me) far too much detail for me to use here.

Anyway, thanks to Terry for once again stepping in and keeping the Chronicle going, and thanks to the trip report writers who keep up the flow of reports that everyone wants to see.

Alan...

Autolign

THE STEERING & SUSPENSION SPECIALISTS

For all your suspension and steering requirements contact:

12 Petone Avenue
Petone
Lower Hutt

Ph. 586 7413



Are you a new member? Do you get the News emails from the club? Do you have access to the club's web-site memberzone? If not then have a word with a committee member as these are all ways in which the club communicates with it's members. Some useful email addresses are:

- Webmaster@ccvc.org.nz (general web site queries)
- Lists@ccvc.org.nz (person who administers the list servs)
- Trips@ccvc.org.nz (Trip Coordinator)
- Newsletter@ccvc.org.nz (to send stuff to the newsletter editor)
- Database@ccvc.org.nz (membership database administrator)
- Access@ccvc.org.nz (Chairman of the Land Access Management Committee)
- NZFWDAdelegate@ccvc.org.nz (NZ Four Wheel Drive Association delegate)
- Treasurer@ccvc.org.nz (club treasurer)
- Welfare@ccvc.org.nz (club welfare officer)
- David.coxon@xtra.co.nz (Club night photo submission)
- Helpdesk@ccvc.org.nz (any general questions)

| Date | Name | Organiser | Category | Place |
|-----------------------|--|-----------------|------------------------|---|
| September 2014 | | | | |
| Wednesday 10th | CCVC Club Night - Visitors Welcome. 7:30pm, Petone Working Mens Club, Udy St, Petone | Charles Odlin | Meeting - 19:30 | Petone Working Men's Club, Udy St |
| Saturday 13th | Akatarawa Ramble - book with Graeme (04) 5267636 or 029 2001700 | Graeme Millard | Family Shiny | Akatarawa Forest |
| Sunday 14th | Annual Eastbourne Clean Up in association with Keep New Zealand Beautiful Week | Darren Young | Family Shiny | Eastbourne Beaches to Harbour Entrance |
| Tuesday 16th | Deadwood Safari Sub Committee - 7:00pm Station Village Bar, Lower Hutt | Neil Blackie | Meeting - 19:30 | -tba- |
| Saturday 20th | Akas with Edges Two - Ruts, Fenceline ++ Very Limited Numbers - Bookings Essential | Stewart Burrell | Shiny 4X4 / Club 4X4 | Akatarawa Forest - Fenceline Track Akatarawa Forest - Ruts |
| Wednesday 24th | CCVC Committee Meeting | Charles Odlin | Meeting - 19:30 | Porirua Club |
| Sunday 28th | Orongorongo Monthly Trip - To be confirmed | Morris Jury | Family Shiny | Orongorongo area |
| October 2014 | | | | |
| Wednesday 8th | CCVC Club Night - Visitors Welcome. 7:30pm, Petone Working Mens Club, Udy St, Petone | Charles Odlin | Meeting - 19:30 | Petone Working Men's Club, Udy St |
| Saturday 11th | Club Champs Set Up | Neil Blackie | Shiny 4X4 | Colin James' property, 615 Whiteman's Valley Road, Whitemans Valley, Upper Hutt |
| Sunday 12th | Akatarawa Ramble - book with Graeme (04) 5267636 or 029 2001700 | Graeme Millard | Family Shiny | Akatarawa Forest |
| Sunday 12th | Club Champs Round 1 | Neil Blackie | Shiny 4X4 / Hard Yakka | Colin James' property, 615 Whiteman's Valley Road, Whitemans Valley, Upper Hutt |
| Tuesday 14th | Deadwood Safari Sub Committee - 7:00pm Station Village Bar, Lower Hutt | Neil Blackie | Meeting - 19:30 | -tba- |
| Friday 17th | Akitio Wild Weekend - FULLY BOOKED | Graeme Millard | Shiny 4X4 | Akitio |
| Saturday 25th | -Orongorongo Monthly Trip - Book with Morris (04) 566 - 6197 Cellphone (021) 629 - 600 | Morris Jury | Family Shiny | Orongorongo area |
| Sunday 26th | Central Zone Club Truck Challenge - Round 1 | Valley 4WD Club | Shiny 4X4 / Club 4X4 | Judd's Farm |
| Wednesday 29th | CCVC Committee Meeting | Charles Odlin | Meeting - 19:30 | Porirua Club |
| November 2014 | | | | |
| Wednesday 12th | CCVC Club Night - Visitors Welcome. 7:30pm, Petone Working Mens Club, Udy St, Petone | Charles Odlin | Meeting - 19:30 | Petone Working Men's Club, Udy St |
| Saturday 15th | Akatarawa Ramble - book with Graeme (04) 5267636 or 029 2001700 | Graeme Millard | Family Shiny | Akatarawa Forest |
| Saturday 15th | Sutherlands Track Working Bee - Bookings Required | -tba- | Shiny 4X4 | |
| Tuesday 18th | Deadwood Safari Sub Committee - 7:00pm Station Village Bar, Lower Hutt | Neil Blackie | Meeting - 19:30 | -tba- |
| Saturday 22nd | South Coast Clean Up - | Barry Insull | Family Shiny | Wellington South Coast |
| Sunday 23rd | Orongorongo Monthly Trip - Book with Morris (04) 566 - 6197 Cellphone (021) 629 - 600 | Morris Jury | Family Shiny | Orongorongo area |
| Wednesday 26th | CCVC Committee Meeting | Charles Odlin | Meeting - 19:30 | Porirua Club |
| Saturday 29th | Club Champs Set Up | Neil Blackie | Shiny 4X4 | Judd's Farm |

Trip Categories

The following trip category definitions, plus any *additional* requirements specified on individual Trip Information Sheets, will be enforced, for safety reasons. Trip Leaders will turn away vehicles or drivers that do not comply. The vehicle and driver requirements given here are a summary of the full requirements listed on the club website. Please refer to www.cvc.org.nz for a definitive list of requirements.

For all Categories: All open or soft-top vehicles must have a roll bar or roll cage.

All Categories **other than Family 4X4** are for members only. Prospective members and visitors are welcome if they can demonstrate to the Trip Leader they are members of another club and have adequate experience.

Family 4X4:

Description: Family trip. These trips will be straightforward and will usually include some degree of guidance in driving techniques as necessary.

Drivers: Particularly suited to family outings and drivers new to off-road driving, this category is also open to anybody who enjoys this style of trip.

Members: Anybody is welcome, especially prospective new members.

Vehicles: An important objective is minimal challenge and minimal risk to vehicles. Club safety equipment is mandatory for club members; it is not mandatory for non-members although it is recommended for vehicles once their drivers have participated in one or two trips. All open or soft-top vehicles must have a roll bar or roll cage.

Shiny 4x4:

Description: More difficult family trips, for shiny wagons and drivers *with some experience* who want more challenge and don't mind minor bush marks etc on their vehicles.

Drivers: Must have some experience, particularly important are experience in stopping, failed hill climbs, steep descents and sidelings. Club members must have completed CCVC Driver Training and participated in at least 2 Family 4X4 trips after becoming a member.

Vehicles: Vehicles must have mud tyres, tow hooks and all the required equipment per the club's document "Vehicle Safety & Equipment Inspections". This applies to all vehicles on the trip.

Club 4x4:

Description: Challenging trips, for experienced drivers. There will be steep and challenging terrain, modestly deep water and mud, likelihood of bush marks.

Drivers: Must have experience beyond that required for Shiny 4x4 trips, including water crossings and vehicle recovery. Club members must have participated in at least 2 Shiny 4X4 trips.

Vehicles: Must have mud tyres, tow hooks and all the required equipment per the club's document "Vehicle Safety & Equipment Inspections". This applies to all vehicles on the trip. Accessories such as high-lift jacks, externally mounted spare tyre, bush bars and multiple jacking points are of advantage. Winches are often particularly useful. Generally a short wheelbase vehicle is better suited for the tight tracks.

Hard Yakka:

Description: Difficult trips with very challenging terrain and surfaces, where winching, digging, and vehicle damage are all a possibility!

Drivers: Experienced drivers only, must have approval of Trip Leader. Club members must have participated in at least 3 Club 4X4 trips.

Vehicles: As per the Club 4x4 category. In addition, a roll-bar or roll-cage is recommended for all vehicles on Hard Yakka trips. Often a winch is mandatory on a Hard Yakka trip; this will be specified on the Trip Information Sheet



www.wgtn4wd.co.nz



Repairs and maintenance of all
off road vehicles.

Modifications a speciality.

CCVC safety inspections

Contact Carl at
Wellington 4WD Specialists Ltd
26 Hawkins Street
Lower Hutt

Phone (04) 976 5325, Fax (04) 976 5313
or 027 201 2529

ACTION TYRES

Call (04) 939 2284

Cars

Vans

4x4's

Tyre Service & Repairs

Commercial Vehicles

Industrial Equipment

Welcome to **ACTION TYRE CENTRE LTD** where you will find great service, and great prices along with friendly staff.

We are here to help you find the right tyre fit for your vehicle at affordable prices. We'll fit them while you put your feet up, relax and have a coffee in the waiting room.

We fix punctures, do wheel alignments, balancing & fitting. We also have fleet servicing for all your business needs. Drop in or give us a call on 04 939 2284.

Tyre & Puncture Repairs, Tyre Fitting, Wheel Balancing, Wheel Alignment
Mag Wheels and Fitting, Battery Check and Replacement

For cars, vans, 4x4's, light and heavy commercial vehicles and also industrial equipment.

Eftpos, Master and Visa cards accepted

About us:

We are a family business that employs a dedicated team to provide friendly and excellent service.

Action Tyre Centre Ltd has been in business for over 20 yrs servicing local and regional public and commercial vehicles.

With over 40yrs experience in the tyre business, Phil is committed to bringing you the best. We are able to source all the quality brands.

We enjoy being part of the Lower Hutt community.



Action Tyres - 7 Wareham Place - Seaview - Lower Hutt - (04) 939 2284

