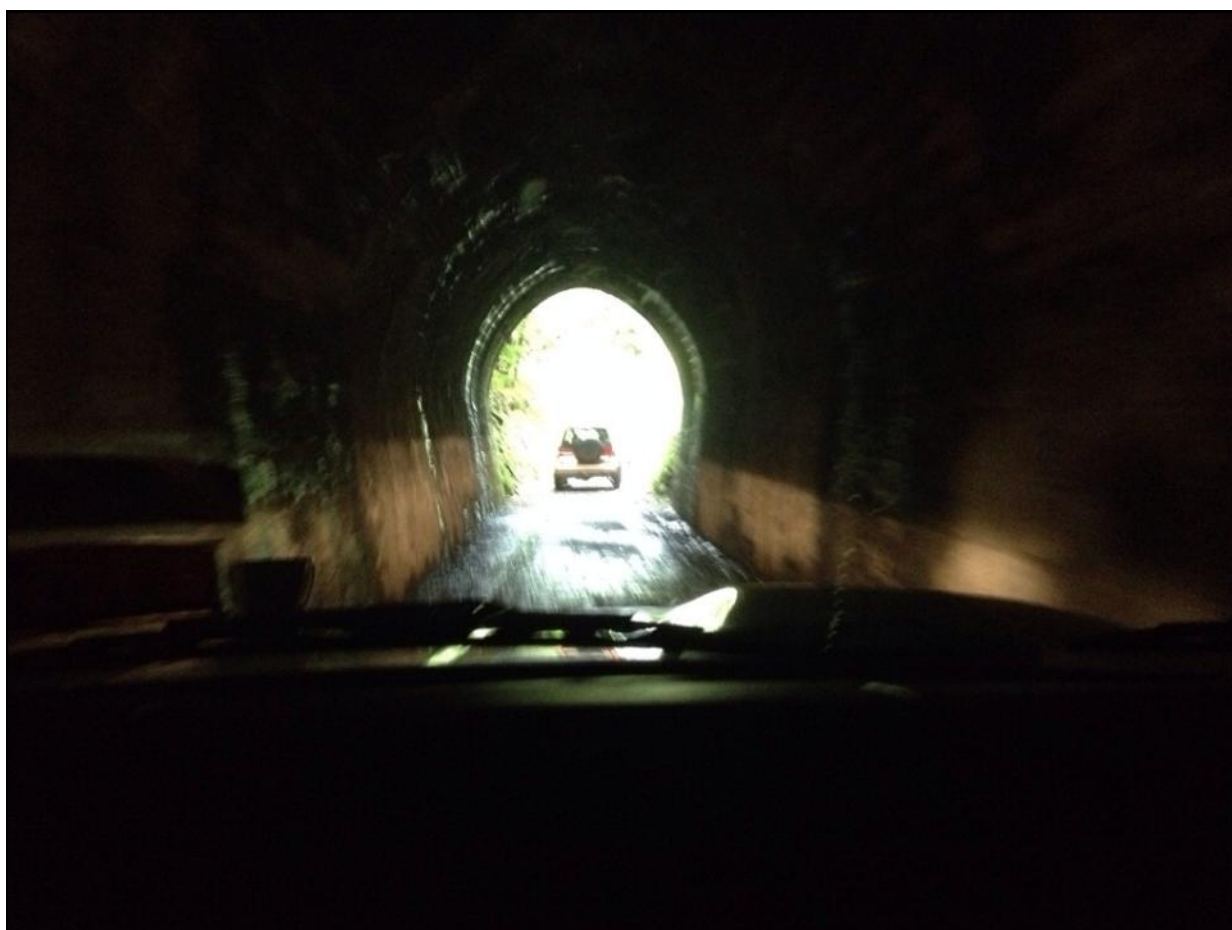




VEHICLE CLUB
Wellington

Cross Country Chronicle

February 2014



The Official Magazine of
The Cross Country Vehicle Club (Wellington) Inc
PO Box 38-762, Te Puni 5045, Wellington

The club meets at 7:30pm on the 2nd Wednesday of each month at the



Time for a holiday in Mooloolaba Pool OR Beach



Air Conditioned Fully Self Contained Apartments located opposite the Famous Mooloolaba Beach with a short stroll to all the Cafes, Restaurants and Shops on Mooloolaba Esplanade.

137 Mooloolaba Esplanade, Mooloolaba, Queensland

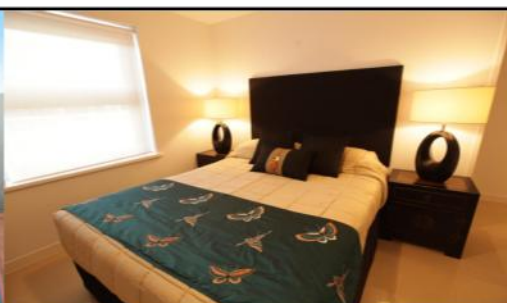
www.windwardapartments.com.au info@windwardapartments.com.au

FREE COOKED BREAKFAST

and Stay for 3 Nights, Pay for 2

Check out our web site or

Email Larry on info@windwardapartments.com.au



WHEN HELP IS NEEDED

Should any members fail to return from any outing, four wheel drive or otherwise, whether as a club member or as a private individual, the following person/s should be contacted in the first instance:

Anthony Reid 973 8262 or 027 273 6579 or 021 061 1831

Morris Jury 566 6197 or 021 629 600

Table of Contents

Cover	Tunnel on Mt Climie Trip (P.8 report)
P. 3	Help, Index, Safety Inspectors
P. 4	Upcoming National Events
P. 5	Committees
P. 7	Presidents Piece
P. 8	GWRC Mt Climie Trip
P. 10	South Island Trip - Report One
P. 12	Deadwood Safari 2014
P. 16	Rangatiki Hunt tag-a-long
P. 17	The Christmas Trip
P. 19	Volunteer Temp Editor Required
P. 20	Club Trips - Feb, Mar & Apr
P. 23	Trip Categories

Vehicle Inspectors

Dayal Landy

Gold Coast Mechanical
2 Epiha St, Paraparaumu
Ph. 04 902 9244

Antony Hargreaves

Epuni Motors 1987 Ltd
2 - 6 Hawkins St, Lower Hutt
Ph. 04 569 3485

Dave Bowler

Pete Beckett

Bowler Motors Ltd
11 Raiha St, Porirua
Ph. 04 237 7251

Grant Guy

G Guy Motors
61-63 Thorndon Quay, Wellington
Ph. 04 472 2020

Carl Furniss

Wellington 4WD Specialists
26 Hawkins Street, Lower Hutt
Ph. 04 976 5325

Shane & Carl

Mendoza Mechanical
34 Goodshed Road, Upper Hutt
Ph. 04 527 7274

NB: Please remember to call and make an appointment before turning up for an inspection!



MAGAZINE CONTRIBUTIONS

This is your magazine so it can only be as good as the contributions you make!! We need any articles, trip reports, technical items, "How-to's", etc to be in the hands of the editor by the end of each calendar month.
Please email to newsletter@ccvc.org.nz or post to 34a Hine Rd, Wainuiomata or fax to 04 914 8366.

DISCLAIMER: The opinions expressed in this magazine are those of the contributors and not necessarily those of the club, it's executive or committee members. Publication of maintenance techniques or mechanical modifications should be weighed against generally accepted procedures and the Club should not be considered an authority in this area.
The mention of products, service procedures or service organisations herein does not constitute endorsement by the Club, the Cross Country Chronicle or it's Editor.

Upcoming National Events

Feb 16: National Trials Round 4

Hosted by the Valley 4WD Club.

Feb 22: Te Awamutu Rotary 4WD Safari

To be based in Waitomo area and will venture out to Marakopa where the real 4WD country is. David Samuel, Entries Co-ordinator, dsamuel@clear.net.nz (with 'Safari' in subject line) for entry details or 07 871 5889. Full entry info available at website www.teawamuturotary.org.nz

Mar 01: 4x4 National Park 2014

Another in this series of events to support local organisations. See www.4x4nationalpark.co.nz for further details.

Mar 08: Glen Massey Safari

Run by Cozzie Four Wheelers Club of Hamilton. Several Glen Massey farm owners have generously given permission for access to their farms. This is a great opportunity to explore an area that only a few have the privilege of viewing. We are raising money for the Glen Massey School through a 4x4 tag along safari across several farms around the Glen Massey area. Suited to all 4WD's with low range, beginners to experts, this is a day for all to enjoy and support the local school. Postponement date of 15th if wet. Cost \$80.00 per vehicle. Lunches available at \$10.00 each (bookings required). Vehicle check at 8.00am and leaving school at 9.00am. For further information and to register see www.glenmasseysafari.tk/ or contact Dom on 027 823-3018 or email dom@gymcare.co.nz

Mar 09: Landrover Owners Club (Otago) Inc Rally

Landrover Owners Club (Otago) inc Rally at their Club grounds Waitati, Dunedin. 4 Classes - Standard, Modified Greater Modified and Super Modified. All Welcome. Accommodation available at Clubrooms for competitors and supporters. For enquires contact Russell 027 222 4879 or rp.quin@xtra.co.nz.

Mar 15: National Trials Round 5

Hosted by Manawatu 4WD Club.

Mar 29-30: Hokiang 4x4 Safari

Previously called Project Promise run by the Kauri Coast 4WD Club. Limited to 60 vehicles, \$160 Driver and 1 passenger. Camping available. This time it is a fundraiser for the Northland Rescue Helicopter (NEST). For more info contact: Serena Carran 09 439 0064 or 021 159 2720 email aneres@xnet.co.nz

Apr 18-21: Zuki Central 2014

Hosted by the CCVC Club Wellington. Zuki Central is for Suzuki owners 4WD Driving in some of the best terrain the lower North Island has to offer. Join like minded Suzuki owners and see how great Suzuki's are. Different day trips for the different classes of Suzuki vehicles and drivers. 1 day registration packages available. Suitable for all Suzuki's from standard to modified, novice drivers to the hard-core. Full details available at www.4wdonline.co.nz or email Zukicentral@gmail.com

Apr 19: National Trials Round 6 (& Final)

Hosted by Counties 4 Wheelers.

Apr 26: Mainland Trophy—Teams Event

A teams event of 3 vehicles per team, using challenging and scenic tracks around the Nelson area. All vehicles required to have full a winch, registration, WoF, and minimum 3rd party insurance. For full details please see www.mainlandwinchchallenges.co.nz

May 17: Teams Tour de Whanga

This is an event aimed at the experienced safari guys with a tuff truck mate or for well set up 4x4 trucks. It is along the lines of the January event but staged on more challenging tracks that will require at least 1 winch per team. Each team will be required to complete a set number of stages during the day with points deducted for failure to get all 3 trucks to a stage end. To be held in Matariki Forest blocks organised by Whangamata 4WD Club.

July 18: Possum Palace Winch Challenge

Held at Omana, Northland. Approximately 2.5 hours from Auckland between Whangarei and Dargaville. To be run under 4x4 Challenges rules with all classes eligible and if enough interest there will be a UTV class as well. All competitors (drivers & co-drivers) need to be members of the NZFWD Association. Proof of 3rd party insurance must be provided. Camping available on site and hot showers are to be provided on site. Cost for the event is \$280.00. For further details contact Andrew Gibson: email andrewroygibson@gmail.com or phone 021 029 85475 or Caleb Thompson: email hstile@hotmail.co.nz or Phone 027 683 4327.

Some details in this column appear courtesy of Cathy Parker, publisher of the New Zealand 4WD and Sportvehicles magazine. Potential participants should contact the event organiser; CCVC cannot take responsibility for any changes or inadvertent inaccuracies.



Club Sub-Committees

The club has the following sub committees running currently (convenor named first, where applicable):

- **60k:** Terence Broad, Ron Johnson, Bruce Mulhare, John Vruink, Mark Wolstenholme
- **Club Recovery:** Anthony Reid, Morris Jury
- **Community Response Group:** Steve Mercer, John Parfitt, Grant Purdie, Mike Murphy, Neil Blackie
- **Competition:** Neil Blackie
- **Deadwood:** Paul Adams
- **Safety:** Murray Taylor, Carl Furniss, Peter King
- **Trip Leaders Forum:** Steve Mercer, All trip leaders
- **Touring Class Membership:** John Parfitt, Murray Taylor, Ian Hutchins, Ger van Hees
- **Web Project:** Murray Wills, Grant Purdie, Stefen Cook, John Parfitt, Mike Stevens

The club also has the following external organisation liaison people:

- **Akatarawa Recreational Access Committee:** Ralph Dobson, Dave DeMartin
- **Foxton Beach Coast Care:** Bruce Mulhare, Grant Purdie, John Vruink
- **Friends of Belmont:** Roger Seymour
- **Greater Wellington Regional Council:** President / Club Captain
- **Horowhenua District Council:** Grant Purdie
- **Tread Lightly!:** Ralph Dobson
- **Wellington City Council:** Barry Insull

A bloke goes to the local council to apply for a job.

The interviewer asks him, "Are you allergic to anything?" He replies, "Yes, caffeine."

"Have you ever worked for the government before?" "Yes, I was in the army." he says, "I was in Iraq for two tours." The interviewer says, "That will give you 10 extra points toward employment."

Then he asks, "Are you disabled in any way?" The guy says, "Yes.. A mine exploded near me when I was there and I lost both of my testicles"..

The interviewer grimaces and then says, "O.K. You've got enough points for me to take you on right away. Our normal hours are from 8.00am to 4.00pm.... ..but you can start tomorrow at 10.00am - and carry on starting at 10.00am every day."

The bloke is puzzled and asks, "If the work hours are from 8.00am to 4.00pm, why don't you want me here until 10.00am? I'm not looking for any special treatment y'know"

"What you have to understand is that this is a council job," the interviewer says, "For the first two hours we just stand around drinking coffee and scratching our balls. There's no point in your coming in for that."

G. Guy Motors

4WD SPECIALISTS NZ



CLUB RADIO CALL SIGNS

The Club uses a series of radio call signs in the Kxxx series to meet our licence requirements. Once you get on a trip you soon know what call sign is tail end charlie etc for the day. But basically if you don't yet have a Call Sign you are not authorised to use the Club radio licence.

Call signs are available to financial members on request to database@ccvc.org.nz

So if you have purchased a suitable radio for CCVC use, make sure you get a call sign allocated.

Upper Hutt

Tyres & Batteries

Opposite Railway Station, Princes St, UH

.....

Tyres
Wheel Alignment
Batteries

Nitrogen Tyre Filling

Finance & Laybuy
Options Available

528 8836

CCVC Life Members

Tom Adams	Graham Barr	George Bean (Deceased)	Leith Bean	Peter Boniface (Deceased)
Stuart Brown	Andy Cockroft	Owen Farghar	Mike Gall	John Hughes
Bob Jeffery (Deceased)	Heather Jeffery	Ron Johnson	Steve Lacey	Colin Landy
Phil Lewton	Vern Lill	Bruce Mulhare	Raynor Mulhare	Ron Oliver (Deceased)
Peter Osborne	Ross Perkins	Grant Purdie	Tony Street	Ron Wadham



Presidents Piece - February 2014

Well.... Another years passes, unfortunately a year older, but hopefully a year wiser.

I hope you all either got away for a family holiday, maybe down south with the 4WD trip, or just chilled out at home mixed with a few off road experiences. My 4WD'ing was somewhat curtailed by what I had thought was a busted CV, which turned out in the end to be a broken axle, with the end of it stuck down inside the diff. So after dropping the whole front end out, dismantling the diff housing, removing the broken pieces. A quick trip to Pickupart and the reverse process, I did manage to get some time out in the truck before work turned up to ruin the vacation, but not the time I had hoped.

The Club has run another successful series of Summer Public trips with the Regional Council, and more to come with the 2nd Sunset Tour and then the Tag along Tour ! I was wrapped to see what one of the attendees to the Mt Climie trip, who also happened to work for GWRC, wrote on their intranet page on the Monday after :

"My hubby and I registered on this trip last Saturday. It was an awesome trip which was great to go on, and was very well organised. Thanks so much to the Parks staff (Thane, Mat, Mitch) as well as the Cross Country Vehicle Club. Also a wonderful reciprocal relationship between us and CCVC - a great example of working together for the greater good. So again thanks to the team for a lovely morning"

It's great to see this sort of response from people who came along for the day/trip. This can only help to improve the image of 4WD'ers out in the public domain ! Big thanks to the Trip Leaders that ran these trips, and also to the members who come with their vehicles on the day.

Valley Club is holding the Deadwood Safari again this month (Sun 16th Feb) and are looking for assistance with marshalling etc. If you are able to assist, even for half the day your presence will be appreciated. In this event it is important that the Clubs in the Wellington area come together to

assist each other, and our turn will come around and we will look for the same help. Talking about this... we need to decide as a Club if we want to run the Deadwood again next year. This will be up for Discussion on club Night, so have a good think about this and come along prepared. If we run it, we need a team of volunteers to organise this months in advance, and then also on the day. Come along Wednesday night and have your say or put your hand up to assist.

It's great to see some mid-week trips being organised, through the Te Kopi Reserve.... Top idea Barry !! we need to organise a few more of these short, 2 to 3 hour trips in the evening while we still have long evenings of day light.

See you out there !!

El Presidente

Sue's Office Services
... - - - ...
Need rescuing? . . . SOS
Sue Parfitt
7 Jasons Place
Churton Park
Wellington

Mobile: 0211810401
Email: sueparfitt7@gmail.com

Specialising in all Bookkeeping
Debtors, Creditors, wages, tax etc

GWRC Mt Climie

On Saturday 11/01/2014 we had the GWRC Mt Climie trip where we as CCVC took members of the public up to the highest accessible spot the vehicles could go.

First we had a normal CCVC style drivers briefing in which trip leader Ralph explained to us how we really had to watch the safety of the guests and ourselves. Also he told us he did not do any seating arrangement and we should let the public figure it out themselves.

After that first briefing the GWRC ranger and Ralph held a second briefing for the guests. The ranger shared some interesting facts about the forest (did you know there is a Goblin/Hobbit forest on Mt Climie?) and Ralph gave his safety briefing. He told them what he told us earlier: They should figure out for themselves in which vehicle they wanted to go and to look for the four door vehicles if they found it difficult to move around.

So after the initial fighting was over.... No, just kidding. It was all very polite and I ended up with two nice ladies that did some hiking here, but never made it to the top. They were really excited about this 4WD trip and really enjoyed the views. I have to say that the views were stunning indeed! We had a light breeze and some clouds, but mainly sun. We could see 360 degrees from Wellington, Mana Island, Kapiti Island, all the way to Martinborough and Lake Ferry on the other side.



We took 6 vehicles to the 3rd antenna while the other 6 stayed at the second antenna. After 10 minutes we alternated, because the views are quite different. On the way back down we did a little diversion and drove down a narrow clay track to Maymorn and then through the old railway tunnel back to the Tunnel Gully car park. That little clay track was most exciting for most of the guests and drivers. It was more a slide than a drive really. Luckily it was short and there was not really much that could go wrong. It may even have given enough excitement to create some potential new club members amongst the guests. The timing was some-

(Continued on page 9)

(Continued from page 8)

thing our trip leader could have done a bit better, because each roundtrip seemed to be delayed a bit more. There were some minor complaints, but I think he did a really good job.

Somewhere along the way after a stop something strange happened. My key, which I normally leave in the ignition so people can move my truck if it is blocking, was suddenly gone!! I looked everywhere, but I couldn't find it anywhere. O.M.G. How am I going to get out of there and how do my guests get back? Then, surprisingly Barry, who was lingering around the whole time, found the key on the ground just next to the truck!!! What a coincidence hey, Barry!? Anyway, thankful I accepted the key from him and we could continue our way down.

We did a total of 4 trips up and down with other guests and the last one finished at 5:35pm. Everybody was very excited about the opportunity to 4WD through this forest on Mt Climie. On the last trip John took over from Ralph as trip leader and he also did a great job.

I'd like to thank the GWRC for giving us the opportunity to drive up Mt Climie and through the old train tunnel and also Ralph and John for organising and leading the trip. I really enjoyed it and will certainly join if it is organised again.

Ger van Hees



CCVC South Island Expedition

As some club members will be aware, there was a CCVC run trip down to the South Island last month - a trip report is being written (well hopefully!) for each day and we will publish them in chronological order (if I get them). The first report is from The Sheriff who was on patrol during the trip and handed out the odd punishment that suited the crime committed.

(Continued on page 10)

THE SHERIFF REPORTS -----

The recent South Island trip was fairly trouble free, but there were a few incidents that should be noted. Those on the trip will know the incidents, but others may be able to determine the players.

Navigation – Oamaru is a pretty straightforward town, spanning both sides of the State Highway. Hard to get really lost but the convoy was certainly a bit lost following the leader without his essential GPS system(s) having been started or calibrated or whatever!

Essential supplies - All trucks had lights which could be used for navigation, but at least one also used the headlight for carrying spare water supplies for medicinal purposes (or was it meniscusal?). Indeed they also carried spare water in their air filter. And also someone else who felt thirsty enough to encourage some water in through the open window. Obviously the Captain should have sealed the craft before flight!

Wildlife – Whilst there were plenty of swift moving animals in some locations, especially rabbits, but one in particular could not even run across a modest shingle scree. And in another location an even slower rodent just waited until the forces of gravity acted on a rock to put their lights out.

Technology – With the “complexity” of running 2WD, 4WD and locking hubs, diffs etc, some folk find it easier not to worry about selecting the best option and just run on and on until they get stopped in the water, and then find that standard 2WD does not cut it!

Transportation – Diesel is a common fuel, but should not be deposited in several litre quantities as one goes hopping across grasslands, or used to lay a breadcrumb like trail across the conservation estate where perhaps no one has gone before.

Mechanical - Various mechanical issues with tyres (lots!), batteries (2), bearings, filters, and electrics occurred, but the Sheriff was advised by those concerned that these issues were probably caused by the manufacturers rather than by actions of the drivers. As such they are not reported in detail. No doubt the day by day reports will disclose more facts! Yeah right.



ZUKI CENTRAL

all profits go to

Ronald McDonald House®
WELLINGTON

Welcome Zuki Central 2014 will be run somewhere in the Lower North Island

Easter 2014. APRIL 18th - 21st

1 day registration package available



4WD Driving in some of the best Terrain The North Island has to offer

Join like minded Suzuki owners and see how great Suzuki's are

Contact. Zukicentral@gmail.com

Vehicle Class
Class Suzuki

Easy - New drivers - Done little or no off-road - For beginners
Easy/Medium - Novice Drivers - Scratching possible, Some mud, easy tracks, shallow water

Class Zooks

Medium - Some experience necessary - possible damage to sills and corners, more mud, harder tracks, Wheel deep water, snorkels, mud tyres
Medium/Hard - Experienced drivers - Heavy bush, deep scratching likely, deep mud, deep water, steep tracks snorkels and good mud tyres

Class Z Force

The Worst (or best) - For very experienced drivers - vehicles to be fully equipped, snorkels and mud tyres etc

FOR SALE

I have had the Ute for many years. The speedo still rings at 105 km/ph.

It has a front beam axle as you can see in the photos. Front and rear Diff locks, Old Man Emu low ratio box.

292,272 KM on clock

I have used the Ute many times for 4x4 driving and it goes well.

This truck has the later, stronger, Hilux gearbox, Crawler transfercase gears, recently fully reconditioned 2.8 engine. A rebuilt Turbo last month. Old Man Emu suspension and has been regularly serviced.

There is a 9000lb winch that goes on front or back
There is a full set of mud tyres= Simex Extreme on 16 inch bead lock rims.

These both are extra purchases if U like.

Contact Steve O'Callaghan if interested on o_callaghan@hotmail.com



Fellas, watch out for this one!

Women often receive warnings about protecting themselves at shopping centres and in dark car parks etc. This is the first warning I have seen for men.. I wanted to pass it on in case you haven't heard about it. A 'heads up' for those men who may be regular customers at Bunnings, Mitre 10, or even K-Mart. This one caught me totally by surprise.

Over the last month I became a victim of a clever scam while out shopping. Simply going out to get supplies has turned out to be quite traumatic. Don't be naive enough to think it couldn't happen to you or your friends. Here's how the scam works:

Two nice-looking, university-aged girls will come over to your car or ute as you are packing your purchases into your vehicle. They both start wiping your windshield with a rag and Windex, with their breasts almost falling out of their skimpy T-shirts. (It's impossible not to look). When you thank them and offer them a tip, they say 'No' but instead ask for a ride to McDonald's. You agree and they climb into the vehicle. On the way, they start undressing. Then one of them starts crawling all over you, while the other one steals your wallet.

I had my wallet stolen March 4th, 9th, 10th, twice on the 15th, 17th, 20th, 24th, & 29th. Also April 1st & 4th, twice on the 8th, 16th, 23rd, 26th & 27th, and very likely again this upcoming weekend. So tell your friends to be careful. What a horrible way to take advantage of us older men. Warn your friends to be vigilant. By the way, K-Mart has wallets on sale for \$2.99 each but I found even cheaper ones for 99c at the two dollar store and bought them out in three of their stores.

Also, you never get to eat at McDonald's. I've already lost 4Kg just running back and forth from Bunnings, to Mitre 10, to K-Mart etc.

So please, send this on to all the older men that you know and warn them to be on the lookout for this scam. (The best times are just before lunch and around 4:30 in the afternoon.)

SNATCH MASTER

high elongation nylon recovery straps

Minimum breaking load 8,000 Kgs

Offers similar elongation to nylon rope, but requires less storage space.

Described by users in trials as 'magic, the best product I have ever used !'

Manufactured by

100% New Zealand made

Bring in your club membership card and receive 15% discount off our Snatch Straps, Shackles and Chains.

Standard lengths 6.0 metres & 9.0 metres with special lengths manufactured to order in either our Auckland or Christchurch factories.

BRIDON

Incorporating

Branches throughout New Zealand
Sales and Service
Free Phone 0508 BRIDON (274366)

Wellington Branch
2 Udy St, Petone 04 568 4384

COOKES GOUROCK

DEADWOOD SAFARI NATIONAL 4X4 TRIAL **Sunday 16th Feb**

Well the Deadwood is upon us in just over a week. CCVC and members have a great tradition in the running of this event which CCVC started over 30 years ago. CCVC own the Deadwood Safari name in NZ and have lent it to Valley 4WD Club for this year's event. With a great venue at Jeff & Noelene Berkett's farm in Whitemans Valley, over 50 entries already, and pretty much all the hard work done now, it's about ready to go. All we need is some fair weather and a few more volunteers as marshals on the day and it'll be another successful event.

If you have Sunday the 16th free and want to be part of the action, please come along as a marshal - we'll give you free entry and parking. With enough volunteers you can have half the day off to spectate, a morning or full day commitment gets you free lunch. Who could turn that down! Bring a friend. If you've not been a marshal before don't be put off - we'll put you with someone experienced and the rules are very straightforward. It's all about being observant and consistent.

I don't want to over-do it, but we do need your help. Please call or email me today if you can assist or have questions.

Thanks
Neil Blackie
blackie.neil@gmail.com

I was visiting my son and daughter-in-law last night when I asked if I could borrow a newspaper. "This is the 21st century, old timer," he said. "We don't waste money on newspapers. Here, you can borrow my iPod."

Well, I can tell you, that bloody fly never knew what hit it...



Grant Uridge - Plus4 Insurance Solutions

- for insurance that pays out at claims time

Grant realises that many people enjoy talking to insurance brokers as much as they enjoy a visit to the dentist!

But at least with Grant we can talk about the slips down Odlins Road or what's the best winch to have!

But getting the most competitive premiums, quality policy wordings and best products for life, health, income and trauma insurance can save you hundreds or thousands of dollars over time.

While Grant Uridge at Plus4 cannot guarantee every claim is paid. He will make sure that you

know what you are covered for and, in the event that there is a problem, will go the extra mile to get it sorted.

Grant makes sure that you have sufficient cover, at the best prices, so that if the unthinkable happens, you and your family can carry on and avoid a financial catastrophe.

Remember, insurance is all about the claim.

For insurance from someone who will talk your language talk to Grant Uridge,
027 448 8689, 04 976 1099
or grant@plus4.co.nz



Every CCVC member taking insurance with Grant receives a free emergency kit

A copy of Grant's Disclosure Statement is available free of charge.

LEADING BRAND 4X4 WINCHES & ACCESSORIES



Runva Performance Winches. The only winch you will ever need. Competition proven in NZ and around the world year after year.

BEST RANGE - BEST QUALITY - BEST PRICE



PREMIUM AUSTRALIAN MCC 4X4 ACCESSORIES

Winch Bars, Side Bars, Rear Bars, Roll Bars, Side Steps, Roof Trays, Drawer Systems.

MCC is a worldwide supplier of quality products.

WINCH BARS / BUILT IN SPOTLIGHTS - \$1200!!

For more info 021 535 007 | info@winch.co.nz | www.winch.co.nz | www.mcc4x4.co.nz

Akatarawa Tag-a-long Trip

A reminder that helpers are required for the Akatarawa Tag-a-long the club is running on 22nd February 2014 on behalf of Greater Wellington Regional Council as part of their Summer programme.

If you are able to assist on the day please let Graeme Millard (Trip Leader for the day) know so he has an idea of the number of vehicles available.

There is also a "Track Maintenance" trip scheduled for the previous weekend (Saturday 15th) to make sure the tracks are in a suitable condition for the tag-a-long. If you are able to assist, again, please contact Graeme.

allworx@paradise.net.nz

Home: 04 526 7636
Cell: 029 200 1700

Also: If you know anyone who owns a 4wd and may be interested in the tag-a-long trip, steer them in the direction of the GWRC Summer Programme site and have them book in. There are still plenty of spaces available at this stage but past experience is that the places fill up fast in the last couple of weeks.

Members of the public should book with:

Mathew Walsh
Phone: 04 830 4041
Email: bookings@gw.govt.nz

Deadwood Safari - National 4x4 Trial



Sunday 16th February 2014 | 8.30AM - 4.00PM

Round 5 of the National 4x4 trails competition. 70 extreme vehicles taking on impossible mud and steep climbs! Get close to the noise and action and watch vehicles ranging from standard to unlimited modified class with four wheel steering and 700 horse V8 and V12 power. A great petrol head and family day out close to home.

Adults \$10

Children \$5

Family \$20

Food and drink available

No eftpos

FREE parking

Location

528 Whitemans Valley, Upper Hutt



Proofreading is a dying art - newspaper headlines:

1. Man kills self before shooting wife and daughter
2. Something went wrong in jet crash, expert says
3. Miners refuse to work after death
4. If strike isn't settled quickly, it may last a while
5. Cold wave linked to temperatures
6. Red tape holds up new bridges

FOR SALE

Landrover with Slide-on Camper

This unit is based in Australia and is fully set up for outback travel.



Vehicle in excellent condition

2003 Defender. TD 5. 130 D/cab

ARB diff locks Front and Rear

Warn winch

Roof Rack

Dual battery system

202 K

2" suspension lift

130 Litre fuel tank

2 spare wheels

and much, much more

Camper

360kg (when empty)

Fridge

Pots, pans, cutlery etc

2003 Trayon 1830

80 L water tank

Portable toilet

and much, much more

portable shower

Cooker

AU \$ 39,000

For more information contact Ian on 027 444 0196 or Wishy@wise.net.nz

RANGITIKEI HUNT

4 WD TREK 2014

All terrain tyres required

*COAST TO COAST
West to East*

Spectacular scenic Rangitikei sheep/beef farms & stations

FIRST HALF 2014

(SECOND HALF 2015)

8th-9th MARCH

Kicking off from Turakina Beach

Turakina - Mangaweka - Napier/Taihape Rd

Cost: \$250 per vehicle (including 2 people)

\$70 per extra adult

Under 12 free

Includes banquet dinner and hearty breakfast!

Cash bar will operate in the evening once all vehicles are in bed for the night.

Limited numbers - please book early to avoid disappointment.

Overnight Camping

BYO tent

BYO lunch x 2 days

For Info Contact : Bain Simpson 0272722280 or 06 327 8989

Pete Nevill 06 327 7385

Register by 20th February 2014

PROCEEDS GO TO THE RANGITIKEI HUNT

The Christmas Trip 2013

The day was a great success again thanks to quite a few people doing a lot of work. Morris of course organised it all, led the trip, played Father Christmas, and generally did what he does so well. The fact that we had a lot of track to use was a result of a lot of that work done by many before the trip even started.

Morris had organised a track repair trip to try and sort out the crossing of the shale, which was expected to take a lot of time. On to the scene comes Double D, who not only provided the answer to sorting out the track (in the form of a digger he just happened to have handy) but he even provided considerable entertainment. Sadly, as he towed his digger on a trailer behind his Pajero, the towing bracket broke off. After a lot of discussion about how to get a big truck sorted with the right sized towing ball, in came a Suzuki to the rescue (we were blocking the track) to move it out of the way.

Half an hour or so later, the Suzuki had towed the trailer (complete with digger and Double D sat atop like areal-life Santa) all the way to the shale. Way to go Frank. Nice one Double D.

To cut a long story short, Dave did his stuff so well, there was talk of putting in a bid for the Transmission Gully job.

The day of the Christmas trip arrived and off we went, with a lot of trucks packed with a lot of kids!



A stop was made by the river so we could all play in the water.



We ended up at the training site for the BBQ, where another brilliant job provided lots of great grub.

Then someone had a good idea. A lot of problem solving had to be done though. The great idea was to set up a flying fox. So where were the trees to attach it to? Well, no trees. There was a nice hill with some rocks on though. So one end of the flying fox is duly attached to a rock at the top. Now where shall we attach the

other end...? There simply wasn't anywhere to attach the other end of the rope... until, another of those great ideas, and AJ has the rope attached to the front of his truck, with a second truck to act as anchor, and the flying fox was flying.



Morris finished off with his lolly scramble and another Christmas Trip was almost at an end. Some went to play in the river for a while. Rabbit, having misunderstood the directions went off on a brief trip of his own.

Many thanks are owed to the many people who helped to make this another great day, especially to Morris who made it all possible, Thank you everyone! Another good one, Morris.

The Rabbit



www.wgtn4wd.co.nz



Repairs and maintenance of all
off road vehicles.

Modifications a speciality.

CCVC safety inspections

Contact Carl at
Wellington 4WD Specialists Ltd
26 Hawkins Street
Lower Hutt

Phone (04) 976 5325, Fax (04) 976 5313
or 027 201 2529

THIS COULD BE YOUR PAGE!

Go on – step outside your comfort zone and write something for the magazine. Even just a few sentences. You don't have to have been stuck or done anything embarrassing, the rest of the members just like to read your perspective on anything related to the club.

SO WHAT CAN YOU WRITE ABOUT?

How about a trip report? So you enjoyed the trip and would love to share your experiences but are not quite sure who was on the trip or where you actually went.

Call the trip leader and they will give you the details you need to tell your story. It can be as long or short as you want - even a couple of sentences will be well received.

Not sure you want to write a whole report, but want to share that silly / funny incident or dob a friend in? Send a mole report to mole@ccvc.org.nz and it might end up in "The Mole Report", a new section of the club mag.



Writing not your thing?

How about sending some photos for club night. We are keen to have a selection for photos for each trip so here are some guidelines to make it easy for everyone:



Try to pick your best dozen or so photos – we can't show too many on the night so lets make it the best ones.

Photos need to be with me before 8:30pm Monday night. That way I can set them up on Monday night and get them to John on Tuesday night so he can get them ready for Wednesday night.



If you can do so, resize the images to 1152 x 864 pixels (or use a lower resolution setting on your camera). This makes the images small enough to email to david.coxon@xtra.co.nz. Alternatively put your pictures on a CD and call me to arrange to get the CD to me. My contact details are:

463 4263 (w)

567 4501 (home before 8:30)

027 451 0361 (m)

Are you a new member? Do you get the News emails from the club? Do you have access to the club's web-site memberzone? If not then have a word with a committee member as these are all ways in which the club communicates with it's members. Some useful email addresses are:

- Webmaster@ccvc.org.nz (general web site queries)
- Lists@ccvc.org.nz (person who administers the list servs)
- Trips@ccvc.org.nz (Trip Coordinator)
- Newsletter@ccvc.org.nz (to send stuff to the newsletter editor)
- Database@ccvc.org.nz (membership database administrator)
- Access@ccvc.org.nz (Chairman of the Land Access Management Committee)
- NZFWDAdelegate@ccvc.org.nz (NZ Four Wheel Drive Association delegate)
- Treasurer@ccvc.org.nz (club treasurer)
- Welfare@ccvc.org.nz (club welfare officer)
- David.coxon@xtra.co.nz (Club night photo submission)
- Helpdesk@ccvc.org.nz (any general questions)



Editorial Ramblings

WANTED: Society Gossip, Scandal, Rumour, and if all else fails, TRIP REPORTS and NEWS! Photos also very welcome

Welcome to the first issue of 2014 - looks like things were happening over the holiday period as we have a few trip reports and the promise of lots more to come covering the two week South Island trip embarked upon by some members.

Some of you will remember that I disappeared on my Big OE in 2010 and we had a stand in editor for my three months absence - well I'm off again this year from the start of June till mid August. So I'm on the lookout for a volunteer to put the magazine together for me whilst I'm away - I will get the magazine published at the start of June but will need someone for the magazine published at the start of July and the start of August.



On the Kids Christmas Trip - December 2013

I currently use Microsoft Publisher software to layout the magazine and then print it to a PDF file and email that to John Parfitt who gets it into the correct place onto the website and send out the email advising everyone that it is available.

Don't let the fact that you haven't got the correct software stop you volunteering, I'm sure we will be able to sort something out. Please drop me an email at newsletter@ccvc.org.nz for any further details, and thanks in advance.

Alan...

Date	Name	Organiser	Category	Place
February 2014				
Saturday 1st	Fraser Crescent School Team Building Day - Seats and Bookings Required	Charles Odlin	Shiny 4X4	Akatarawa Forest
Monday 3rd	Trip Leaders Forum	Steve Mercer	Meeting - 19:30	
Saturday 8th	Greater Regional Council Sunset Tour No2 - Members of the public must book via the GWRC Summer Programme	Greater Wellington Regional Council	Shiny 4X4	Battle Hill & Puketiro Forest
Sunday 9th	Sutherlands Track -To be confirmed!!	Andrew Johnston	Club 4X4	Sutherland's Track
Wednesday 12th	CCVC Club Night - Visitors Welcome. 7:30pm, Petone Working Mens Club, Udy St, Petone	Charles Odlin	Meeting - 19:30	Petone Working Men's Club, Udy St
Thursday 13th	Te Kopahau Reserve in the evening - Bookings Required	Barry Insull	Shiny 4X4	Te Kopahou Reserve
Saturday 15th	Tag-a-long Reccy and maintenance trip in the Akatarawas - Bookings Required	Graeme Millard	Shiny 4X4	Akatarawa Forest
Sunday 16th	Deadwood Safari - (528 Whitemans Valley)	Valley 4WD Club	Event	
Thursday 20th	Te Kopahau Reserve in the evening - Bookings Required	Barry Insull	Shiny 4X4	Te Kopahou Reserve
Saturday 22nd	Greater Wellington Regional Council 4wd Back Country Akatarawa - Members of the public must book with GRWC as part of their Summer Programme	Graeme Millard	Shiny 4X4	Akatarawa Forest
Sunday 23rd	Afternoon trip to Odilins Road to the Car Park - ATTITUDE Required - Book with David 045674501 Cellphone 0274510361	David Coxon	Family Shiny / Shiny 4X4	Odilins Road - To Renata Car Park
Sunday 23rd	Orongorongo Monthly Trip - Book with Morris (04) 566 - 6197 Cellphone (021) 629 - 600	Morris Jury	Family Shiny	Orongorongo area
Wednesday 26th	CCVC Committee Meeting	Charles Odlin	Meeting - 19:30	Porirua Club
March 2014				
Saturday 8th	CCVC Club Champs Round 1 - Standard Class	Neil Blackie	Shiny 4X4	-tba-
Sunday 9th	CCVC Club Champs Round 1 - Club and Modified Class	Neil Blackie	Club 4X4 / Hard Yakka	-tba-
Wednesday 12th	CCVC Club Night - Visitors Welcome. 7:30pm, Petone Working Mens Club, Udy St, Petone	Charles Odlin	Meeting - 19:30	Petone Working Men's Club, Udy St
Sunday 16th	Akatarawa Ramble - Book with Graeme (04) 5267636 or 029 2001700	Graeme Millard	Family Shiny	Akatarawa Forest
Saturday 22nd	CCVC Club Champs Round 2 - Standard Class	Neil Blackie	Shiny 4X4	-tba-
Sunday 23rd	CCVC Club Champs Round 2 - Club and Modified Class	Neil Blackie	Club 4X4 / Hard Yakka	-tba-
Wednesday 26th	CCVC Committee Meeting	Charles Odlin	Meeting - 19:30	Porirua Club
Saturday 29th	Orongorongo Monthly Trip - Book with Morris (04) 566 - 6197 Cellphone (021) 629 - 600	Morris Jury	Family Shiny	Orongorongo area
April 2014				
Saturday 5th	Akatarawa Ramble - Book with Graeme (04) 5267636 or 029 20017000	Graeme Millard	Family Shiny	Akatarawa Forest
Wednesday 9th	CCVC Club Night - Visitors Welcome. 7:30pm, Petone Working Mens Club, Udy St, Petone	Charles Odlin	Meeting - 19:30	Petone Working Men's Club, Udy St
Friday 18th	Zuki Central 2014	Steve Mercer	Family Shiny / Hard Yakka	
Sunday 27th	Orongorongo Monthly Trip - Book with Morris (04) 566 - 6197 Cellphone (021) 629 - 600	Morris Jury	Family Shiny	Orongorongo area
Wednesday 30th	CCVC Committee Meeting	Charles Odlin	Meeting - 19:30	Porirua Club

Trip Categories

The following trip category definitions, plus any *additional* requirements specified on individual Trip Information Sheets, will be enforced, for safety reasons. Trip Leaders will turn away vehicles or drivers that do not comply. The vehicle and driver requirements given here are a summary of the full requirements listed on the club website. Please refer to www.cvc.org.nz for a definitive list of requirements.

For all Categories: All open or soft-top vehicles must have a roll bar or roll cage.

All Categories **other than Family 4X4** are for members only. Prospective members and visitors are welcome if they can demonstrate to the Trip Leader they are members of another club and have adequate experience.

Family 4X4:

Description: Family trip. These trips will be straightforward and will usually include some degree of guidance in driving techniques as necessary.

Drivers: Particularly suited to family outings and drivers new to off-road driving, this category is also open to anybody who enjoys this style of trip.

Members: Anybody is welcome, especially prospective new members.

Vehicles: An important objective is minimal challenge and minimal risk to vehicles. Club safety equipment is mandatory for club members; it is not mandatory for non-members although it is recommended for vehicles once their drivers have participated in one or two trips. All open or soft-top vehicles must have a roll bar or roll cage.

Shiny 4x4:

Description: More difficult family trips, for shiny wagons and drivers *with some experience* who want more challenge and don't mind minor bush marks etc on their vehicles.

Drivers: Must have some experience, particularly important are experience in stopping, failed hill climbs, steep descents and sidelings. Club members must have completed CCVC Driver Training and participated in at least 2 Family 4X4 trips after becoming a member.

Vehicles: Vehicles must have mud tyres, tow hooks and all the required equipment per the club's document "Vehicle Safety & Equipment Inspections". This applies to all vehicles on the trip.

Club 4x4:

Description: Challenging trips, for experienced drivers. There will be steep and challenging terrain, modestly deep water and mud, likelihood of bush marks.

Drivers: Must have experience beyond that required for Shiny 4x4 trips, including water crossings and vehicle recovery. Club members must have participated in at least 2 Shiny 4X4 trips.

Vehicles: Must have mud tyres, tow hooks and all the required equipment per the club's document "Vehicle Safety & Equipment Inspections". This applies to all vehicles on the trip. Accessories such as high-lift jacks, externally mounted spare tyre, bush bars and multiple jacking points are of advantage. Winches are often particularly useful. Generally a short wheelbase vehicle is better suited for the tight tracks.

Hard Yakka:

Description: Difficult trips with very challenging terrain and surfaces, where winching, digging, and vehicle damage are all a possibility!

Drivers: Experienced drivers only, must have approval of Trip Leader. Club members must have participated in at least 3 Club 4X4 trips.

Vehicles: As per the Club 4x4 category. In addition, a roll-bar or roll-cage is recommended for all vehicles on Hard Yakka trips. Often a winch is mandatory on a Hard Yakka trip; this will be specified on the Trip Information Sheet

Autolign

THE STEERING & SUSPENSION SPECIALISTS

For all your suspension and steering requirements contact:

12 Petone Avenue
Petone
Lower Hutt

Ph. 586 7413



WR TWIGG Ltd

Light / Heavy Transport Engineering Supplies

Auto Electrical Supplies

Abrasives

Cutting Tools

Brass Fittings & Valves

Chemicals & Lubricants

Heavy Transport Parts

Light Trailer Components



Hand & Power Tools

Fasteners

Hose & Tubing

Clips & Clamps

Trailer Parts

Bolts & Nuts

Boat Trailer Rollers



45 Waione Street, Petone, Lower Hutt

Ph. 04 570 6688, Fax. 04 570 6686, Mob. 021 445 239

ACTION TYRES

Call (04) 939 2284

Cars

Vans

4x4's

Tyre Service & Repairs

Commercial Vehicles

Industrial Equipment

Welcome to **ACTION TYRE CENTRE LTD** where you will find great service, and great prices along with friendly staff.

We are here to help you find the right tyre fit for your vehicle at affordable prices. We'll fit them while you put your feet up, relax and have a coffee in the waiting room.

We fix punctures, do wheel alignments, balancing & fitting. We also have fleet servicing for all your business needs. Drop in or give us a call on 04 939 2284.

Tyre & Puncture Repairs, Tyre Fitting, Wheel Balancing, Wheel Alignment
Mag Wheels and Fitting, Battery Check and Replacement

For cars, vans, 4x4's, light and heavy commercial vehicles and also industrial equipment.

Eftpos, Master and Visa cards accepted

About us:

We are a family business that employs a dedicated team to provide friendly and excellent service.

Action Tyre Centre Ltd has been in business for over 20 yrs servicing local and regional public and commercial vehicles.

With over 40yrs experience in the tyre business, Phil is committed to bringing you the best. We are able to source all the quality brands.

We enjoy being part of the Lower Hutt community.



Action Tyres - 7 Wareham Place - Seaview - Lower Hutt - (04) 939 2284

