



VEHICLE CLUB
Wellington

Cross Country Chronicle

June 2014



The Official Magazine of
The Cross Country Vehicle Club (Wellington) Inc
PO Box 38-762, Te Puni 5045, Wellington

The club meets at 7:30pm on the 2nd Wednesday of each month at the



Time for a holiday in Mooloolaba Pool OR Beach



Air Conditioned Fully Self Contained Apartments located opposite the Famous Mooloolaba Beach with a short stroll to all the Cafes, Restaurants and Shops on Mooloolaba Esplanade.

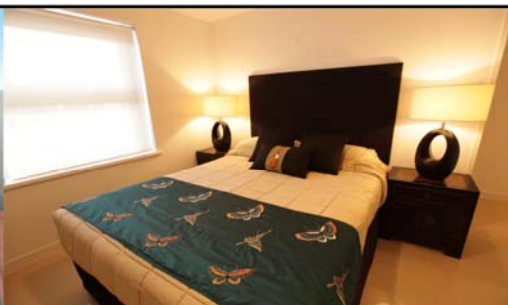
137 Mooloolaba Esplanade, Mooloolaba, Queensland

www.windwardapartments.com.au info@windwardapartments.com.au

FREE COOKED BREAKFAST

and Stay for 3 Nights, Pay for 2
Check out our web site or

Email Larry on info@windwardapartments.com.au



WHEN HELP IS NEEDED

Should any members fail to return from any outing, four wheel drive or otherwise, whether as a club member or as a private individual, the following person/s should be contacted in the first instance:

Anthony Reid 973 8262 or 027 273 6579 or 021 061 1831

Morris Jury 566 6197 or 021 629 600

Table of Contents

Cover	Zukicentral (photo Chris Mackie)
P. 3	Help, Index, Safety Inspectors
P. 4	Upcoming National Events
P. 7	Presidents Piece
P. 8	South Island Trip - Another Day Report
P. 10	2014 AGM Presidents Report
P. 12	CCVC 2014 Awards night
P. 13	Zukicentral
P. 16	NZ4WDA AGM & Conference
P. 19	Thank You Letter (apologies for res)
P. 22	Club Trips - June, July & August
P. 23	Trip Categories

Vehicle Inspectors

Dayal Landy

Gold Coast Mechanical
2 Epiha St, Paraparaumu
Ph. 04 902 9244

Antony Hargreaves

Epuni Motors 1987 Ltd
2 - 6 Hawkins St, Lower Hutt
Ph. 04 569 3485

Dave Bowler

Pete Beckett

Bowler Motors Ltd
11 Raiha St, Porirua
Ph. 04 237 7251

Grant Guy

G Guy Motors
61-63 Thorndon Quay, Wellington
Ph. 04 472 2020

Carl Furniss

Wellington 4WD Specialists
26 Hawkins Street, Lower Hutt
Ph. 04 976 5325

Shane & Carl

Mendoza Mechanical
34 Goodshed Road, Upper Hutt
Ph. 04 527 7274

NB: Please remember to call and make an appointment before turning up for an inspection!



MAGAZINE CONTRIBUTIONS

This is your magazine so it can only be as good as the contributions you make!! We need any articles, trip reports, technical items, "How-to's", etc to be in the hands of the editor by the end of each calendar month. Please email to newsletter@ccvc.org.nz or post to 34a Hine Rd, Wainuiomata or fax to 04 914 8366.

DISCLAIMER: The opinions expressed in this magazine are those of the contributors and not necessarily those of the club, it's executive or committee members. Publication of maintenance techniques or mechanical modifications should be weighed against generally accepted procedures and the Club should not be considered an authority in this area. The mention of products, service procedures or service organisations herein does not constitute endorsement by the Club, the Cross Country Chronicle or it's Editor.

Upcoming National Events

Jun 21: Mudchaser Mud Drags

Mudchaser Mud Drags by the Eastern Bay Twin Diffs Club. An action packed and fundraising event for Dream Chaser, a Child Cancer Charity. To be held at 80 Tahuna Road, Te Teko. \$20.00 Family Pass (2 adults, 2 Kids), \$10.00 Adults \$5.00 Kids \$10.00 truck rides. No dogs or alcohol. Contact email mud-chaser@outlook.com

Jul 04-06: Mainland Winch Challenge Round 2

Mainland Winch Challenge Series to be held at Oxford. Limited to 40 vehicles with scrutineering and night stages Friday night. All vehicle classes with a "Clubman B" invitational class included. All vehicles to have registration and WoF except Outlaw. Accommodation on site as normal for a small fee to cover costs. See mainlandwinchchallenges.co.nz for more details.

July 18-20: Force4 - King of the Palace - Winch Challenge

Held at Omana, Northland. Approximately 2.5 hours from Auckland between Whangarei and Dargaville. To be run under 4x4 Challenges rules with all classes eligible and if enough interest there will be a UTV class as well. All competitors (drivers & co-drivers) need to be members of the NZFWD Association. Proof of 3rd party insurance must be provided. Camping available on site and hot showers are to be provided on site. Cost for the event is \$280.00. For further details contact Andrew Gibson: email andrewroygibson@gmail.com or phone 021 029 85475 or Caleb Thompson: email hstile@hotmail.co.nz or Phone 027 683 4327.

Aug 01-02: Mainland Winch Challenge Round 3

Round 3 of the Mainland Winch Challenge Series to be held at Ceder Creek, Dunedin. Limited to 40 vehicles with scrutineering and night stages Friday night. All vehicle classes with a "Clubman B" invitational class included. All vehicles to have registration and WoF except Outlaw. See www.mainlandwinchchallenges.co.nz for more details.

Sept 05-06: Mainland Winch Challenge Round 4 - CANCELLED

Round 4 of the Mainland Winch Challenge Series to be held at Queenstown (Crown Range). For further details go to www.mainlandwinchchallenges.co.nz for more details.

Oct 03-05: Mainland Winch Challenge Round 5

Round 5 of the Mainland Winch Challenge Series to be held at Makihikihi, Timaru. For more details see www.mainlandwinchchallenges.co.nz for more details.

Oct 18-19: Manukau Winch Challenge

Manukau Winch Challenge, to be held in the Onewhero area. Further details to come, see www.manukau4wd.org.nz for more details.

Nov 14-16: NZ1 Winch Challenge

To be based in Christchurch and is billed as the biggest event of the year. Friday is scrutineering and a public vehicle display for the public. Vehicles will be parked up with a moneybox in front of each and the public will vote for their favourite with all proceeds going to St Johns. The public will get to see the vehicles compete on a man-made course under lights in central Christchurch. Saturday is another public day on the outskirts of Christchurch with Sunday a 1 stage with a mass start taking 204 hours which will test endurance of teams. Refer to www.mainlandwinchchallenges.co.nz for full details.

Dec 06-07: Operation Stirling, Waiouru

Tentative day only, to be confirmed in August. The tour is specifically designed for families and owners of 4x4s who want to go off road, see amazing sights, experience adventure but not damage their vehicles. The route will be selected to accommodate utes, SUVs and the more road orientated 4x4s. Big mud tyres and winches are not required. Camping provided on the Waiouru military camp rugby field and an Army meal provided on the Saturday night plus both breakfasts. The more 'club orientated 4x4s' are welcome to attend and these vehicles will either be used for recovery or will be split into their own group so they can undertake more challenging terrain.

Some details in this column appear courtesy of Cathy Parker, publisher of the New Zealand 4WD and Sportvehicles magazine. Potential participants should contact the event organiser; CCVC cannot take responsibility for any changes or inadvertent inaccuracies.

Please support our generous sponsors...



Grant Uridge - Plus4 Insurance Solutions

- for insurance that pays out at claims time

Grant realises that many people enjoy talking to insurance brokers as much as they enjoy a visit to the dentist!

But at least with Grant we can talk about the slips down Odlin's Road or what's the best winch to have!

But getting the most competitive premiums, quality policy wordings and best products for life, health, income and trauma insurance can save you hundreds or thousands of dollars over time.

While Grant Uridge at Plus4 cannot guarantee every claim is paid. He will make sure that you

know what you are covered for and, in the event that there is a problem, will go the extra mile to get it sorted.

Grant makes sure that you have sufficient cover, at the best prices, so that if the unthinkable happens, you and your family can carry on and avoid a financial catastrophe.

Remember, insurance is all about the claim.

For insurance from someone who will talk your language talk to Grant Uridge,
027 448 8689, 04 976 1099
or grant@plus4.co.nz



Every CCVC member taking insurance with Grant receives a free emergency kit
A copy of Grant's Disclosure Statement is available free of charge.

G. Guy Motors

4WD SPECIALISTS NZ



CLUB RADIO CALL SIGNS

The Club uses a series of radio call signs in the Kxxx series to meet our licence requirements. Once you get on a trip you soon know what call sign is tail end charlie etc for the day. But basically if you don't yet have a Call Sign you are not authorised to use the Club radio licence.

Call signs are available to financial members on request to database@ccvc.org.nz

So if you have purchased a suitable radio for CCVC use, make sure you get a call sign allocated.

Upper Hutt

Tyres & Batteries

Opposite Railway Station, Princes St, UH

.....

Tyres
Wheel Alignment
Batteries

Nitrogen Tyre Filling

Finance & Laybuy
Options Available

528 8836

CCVC Life Members

Tom Adams	Graham Barr	George Bean (Deceased)	Leith Bean	Peter Boniface (Deceased)
Stuart Brown	Andy Cockroft	Owen Farghar	Mike Gall	John Hughes
Bob Jeffery (Deceased)	Heather Jeffery	Ron Johnson	Steve Lacey	Colin Landy
Phil Lewton	Vern Lill	Bruce Mulhare	Raynor Mulhare	Ron Oliver (Deceased)
Peter Osborne	Ross Perkins	Grant Purdie	Tony Street	Ron Wadham



Presidents Piece - June 2014

On one hand it's been a quiet month after Easter with mainly a club rip each weekend.... But then we had our AGM, the start of a new year, new Committee (well none of them are that new) and new goals ahead of us, one of which is to run another successful Deadwood Safari next year. I attended the first meeting of the Deadwood Committee a couple of weeks ago and it was great to see such a strong turnout of members willing to get involved. It is imperative that we ensure this event is run well for the competitors, for the Club's name, but also for history of the Deadwood name !! and also to not to forget as a fundraiser too!

The Club's Akatarawa Trip Leaders have all (those that could attend) been through ARAC's recertifying course now with the 2nd course held last weekend and attended by around 40 TL's from a number of clubs. Talking to TL's it sounds like the courses we well run and particularly informative presentation by the GWRC Rangers.

The New Zealand Four Wheel Drive Association held its AGM last weekend (23rd/24th May) in Auckland, and the Club was represented by John Vruink and Morris Jury. While there has been change in the Executive with a new President and Secretary/Treasurer, it was great to see both Roger Seymour and Brent Samson retaining their respective PRO positions meaning some continuity in the exec team going forward.

By the time this magazine is published we will have had Queens Birthday. Great to see again an away trip being held over a long weekend. That extra day in the weekend really makes these trips worth it, otherwise it seems you just get there, have a day's drive and next thing you're starting to head back again !! Hope you all get a chance over the weekend to get out and get muddy....

See you out there !

Charles Odlin
President
Wellington Cross Country Vehicle Club



Club Sub-Committees

The club has the following sub committees running currently (convenor named first, where applicable):

- **Club Recovery:** Anthony Reid, Morris Jury
- **Community Response Group:** Steve Mercer, John Parfitt, Grant Purdie, Mike Murphy, Neil Blackie
- **Competition:** Neil Blackie
- **Deadwood:** Neil Blackie
- **Safety:** Murray Taylor, Carl Furniss, Peter King
- **Trip Leaders Forum:** Steve Mercer, All trip leaders
- **Touring Class Membership:** John Parfitt, Murray Taylor, Ian Hutchins, Ger van Hees
- **Web Project:** Murray Wills, Grant Purdie, Stefen Cook, John Parfitt, Mike Stevens

The club also has the following external organisation liaison people:

- **Akatarawa Recreational Access Committee:** Ralph Dobson
- **Foxton Beach Coast Care:** Bruce Mulhare, Grant Purdie, John Vruink
- **Friends of Belmont:** Roger Seymour
- **Greater Wellington Regional Council:** President / Club Captain
- **Horowhenua District Council:** Grant Purdie
- **Tread Lightly!:** Ralph Dobson
- **Wellington City Council:** Barry Insull

FOR SALE



Brand new, still in the box Vertex UHF vehicle transceiver, please contact Philip Orchard

kiwiphilip@gmail.com

South Island Trip: Glen Lyon Station/ Dobson Valley: Day 8.

As part of the South Island trip we stayed 7 days at Lake Tekapo. This was so we could explore up the sides of the lakes on different days and have a base to come back to at night; time for social contacts and of course the nightly briefing/ "dice awards", without having to repack tents and move on each day to a new site. People could opt out if they wished and have a rest/ recreation day. It also allowed for some flexibility in the days if we struck bad weather and a particular trip could be rescheduled.

This was the case with the Dobson Valley, on the right hand side of Lake Ohau. The Dobson River joins the Hopkins to feed the glacial Lake Ohau. It was first planned for the 2nd day at Tekapo (Wednesday) but in the first phone call to the Wigley's at Glen Lyon Station, they told us that the rivers were up and the tracks were muddy. "Give us a call on Thursday". Thursday's call... The rivers were down but there was rain expected the next day.

The next day it rained! When we called them from Mt Cook on our R & R day it was raining heavily on our side of the Alps. We decided to leave it for a few days. What we had to realise was that the headwaters of Lake Ohau are fed by water from the Dividing Range catchment area, so what we were seeing at Lake Tekapo wasn't a true picture.



On the 2nd to last night at Tekapo we got a "tomorrow looks promising as the rivers are dropping again" and we had to ring to confirm the next morning. Finally it was all-on!

The owners of the station were insistent that all our vehicles be cleaned and checked for Didymo before we entered their property. As we had bought spray packs with us and been given the OK at the Backpackers down the road to use their water and concrete pad we had complied with the instructions. (As an aside the "rangers" at the ferry were impressed that as a group, we had taken responsible measures to check and physically clean



our vehicles. By the end of the trip we had probably all cleaned underneath at least 4 times.)

We travelled via the Ohau Canal road, with the commercial salmon farms on the canal, towards the Glen Lyon homestead which is 36.7km up the side of Lake Ohau.

We had morning tea at the boat ramp on the side of the lake. There was a really nice looking apple tree laden, and I mean laden, with good quality apples; albeit not ripe yet.

We could see the windy steep road up the Ohau Ski field that we had taken a few days earlier. Impressive! Did we really climb up that?

The owners had asked us to bring

(Continued on page 9)

(Continued from page 8)

in 3 litres of milk as someone else had forgotten to bring it in. 3 litres doesn't sound much when they live at least 40 km from the nearest supermarket or even corner dairy! Mrs Wigley said that she had been going to make us a cake for our picnic but didn't have any milk to do so. Nice thought any way! The farm owners and workers all looked very busy when we turned up as they were loading horses into a horse float for movement up the valley.

We had further instructions to keep one wheel on the hard in the puddles to try and avoid deepening and widening them. This was after all the main track up the valley for the workers' vehicles and not solely for 4WD pleasure.

We followed the track up the side of the Dobson River through farm gates with Ross and Michelle as our fearless leaders, in Enterprise ("boldly going where no-one has gone before!") One gate that Steve and Liz were monitoring had two very large ferocious looking bulls nearby in the paddock, pawing at the ground at the sight of the vehicles. Needless to say both Steve and Liz were glad to have the gate closed and be back in their vehicle.

Eventually we were picking our way along, zigzagging across streams and shingle fans as the track disappeared and reappeared. We felt dwarfed by the hills on either side. On the other side of the Dobson River valley there was thick bush on the hillsides; in comparison with the sparse vegetation on our side. We skirted around a large wetland swamp area with comments on the radio of how we wouldn't want to veer into it accidentally.

As we were heading towards Station Hut and two lone pine trees on the beach, (how had they avoided river changes and erosion?) we came across a bluff with a divided track. Michelle, Graeme and Ross walked the two tracks and then told the team to choose as both required some technique to manoeuvre. One track disappeared over and down the hill steeply, was narrow with a severe undercut, but would be possible if one took one's time and kept right. The other went uphill across some off-camber/ sidelings, ditches and ruts before going down. Each way involved avoiding the Matagouri. (Pete's nemesis!). People called over the radio which route they went.

Out came the deck chairs for our very pleasant lunch at Station Hut! This was the life; awesome scenery to take-in, group camaraderie, no radios, fast cars, jet boats, noisy campers or having to share facilities! Enterprise investigated whether we could cross the river but it was decided that we should just stay on the one side.

On our way back down the river we met the station workers coming across the river on horseback. They had a packhorse with them so were intending to be away for a day or so; mustering perhaps. We passed one worker in a Toyota Surf as the support vehicle. The driver was obviously a crack-shot at eliminating rabbits as we came across several carcasses on the way back. We saw the horse float parked up on the track near the river. The horses had obviously been transported by horse float as far as it could go.

Graeme called in to talk with Mrs Wigley as we came to the homestead again and there were comments over the radio about him having "jam and scones" with the farmer's wife. All in the name of PR! Another enjoyable day amongst the many!

Team Grasshopper: Linda and Graeme

Deadwood Safari

Did you know that the name "Deadwood Safari" is a registered Trade Mark of CCVC and we "loan" its use to other clubs to run the event?

Congratulations to Valley Club on a fantastic Deadwood Safari - the sun shone, the crowds gathered and it was a terrific event.

See the attached blog to see what a member of the public thought of the event:

<http://wysiwygpurple.wordpress.com/2014/02/16/february-17-2014-mayhem-in-the-mud/>

Next year it is CCVC's turn to run the Deadwood and now is the time when members need to be putting their names forward to be part of the organising committee as we need to apply for a date (before all the good ones are taken) and start the ball rolling.

SNATCH MASTER

high elongation nylon recovery straps

Minimum breaking load 8,000 Kgs

Offers similar elongation to nylon rope, but requires less storage space.

Described by users in trials as 'magic, the best product I have ever used !'

100% New Zealand made

Bring in your club membership card and receive 15% discount off our Snatch Straps, Shackles and Chains.

Standard lengths 6.0 metres & 9.0 metres with special lengths manufactured to order in either our Auckland or Christchurch factories.

BRIDON

Incorporating

Branches throughout New Zealand
Sales and Service

Free Phone 0508 BRIDON (274366)

Wellington Branch

2 Udy St, Petone 04 568 4384

COOKES GOUROCK

CCVC Annual General Meeting – 14th May 2014 Presidents Report 2014

Another year rolls by in the Clubs history, my first as President. I can't believe how quickly it has gone by. The past 12 months have again been a reasonably quiet and steady time for the Club. Membership numbers for the Club have again held steady with around 225 Ordinary and Life Members at last count. New members coming into the Club are very important as we will always have some attrition with members moving away from Wellington, from 4WD'ing and unfortunately from life, so I do remind members to welcome those new comers with open arms, as these are the ones who will take this Club into its 50 and 60th years.

The Clubs finances are again in very good stead; consequently the Committees recommendation to the Club is to maintain Subs as they are for the incoming year. The Turangi land has been on the market now for over 6 months, with a couple of interested parties, but it appears it is going to be a long and slow sale process. However the Club doesn't need the money, so we would prefer to wait for a reasonable offer.

One of the main operational changes we bought about this year has been the instigation a new on-line Membership Database, with on line payments through PayPal. While this has majorly lowered the effort Club Officers have had to expend in getting Membership invoices out, and more importantly manage the intricacies of our member's methods of paying their subs, I suspect it has been an internet shock to some members having to out their credit cards on line for the first time. However the gains far outweigh the negatives and overall I believe been a great success.

Highlights of the past year would have to be the running of ZukiCentral again. Congratula-

(Continued on page 11)

LEADING BRAND 4X4 WINCHES & ACCESSORIES



Runva Performance Winches. The only winch you will ever need. Competition proven in NZ and around the world year after year.

BEST RANGE - BEST QUALITY - BEST PRICE



PREMIUM AUSTRALIAN MCC 4X4 ACCESSORIES

Winch Bars, Side Bars, Rear Bars, Roll Bars, Side Steps, Roof Trays, Drawer Systems.

MCC is a worldwide supplier of quality products.

WINCH BARS / BUILT IN SPOTLIGHTS - \$1200!!

For more info 021 535 007 | info@winch.co.nz | www.winch.co.nz | www.mcc4x4.co.nz

(Continued from page 10)

tions to the organising team with around 20 Suzuki's from around the country participating. The profits from this event will be donated to Ronald MacDonald House. A great reason to get out and enjoy the countryside! In addition to this there have been trips away to Ohine-wairua Station, Otepawa station, National Park & 42nd Traverse, and also another South Island Trip. Members have also joined many other Clubs trips and safaris.

Our trip numbers are down slightly this year, but we are still running a good number of Family Shiny Trips and Training days. We do need to focus on the other trip levels, and this will need to be a major focus for the Committee and Trip leaders this coming year.

I thank the Club for the support over the past 12 months, also thank the Committee members for their great support in making sure the Club continues to run and make my life easier, but more importantly the Trip Leaders who work away so many weekends running trips for you members, giving this Club a reason to exist. Without the effort and time put into the Club by these people this Club would not continue to be the size and strength it is.

Once again I thank you all and look forward to the next year.

Regards

Charles Odlin
CCVC President

Cross Country Vehicle Club (Wellington) Inc Annual Awards Dinner

Petone Workingmans Club

Sat 19 July 2014

Drinks from 6:00pm, Dinner at 7:00pm

Cost is \$35.00 per member/partner

Guest Speaker - *Keith Quinn*

ACTION TYRES

Call (04) 939 2284

Cars Vans 4x4's Tyre Service & Repairs
Commercial Vehicles Industrial Equipment



\$1000 tyre voucher to be won by some lucky ticket

Also drawn on the night will be the Club Champs winner of the trip to Mooloolaba including airfares and accommodation at the Windward Apartments to the value of \$1500.

WINDWARD
Holiday Apartments
Mooloolaba

COOKES
BRIDON

Bookings to John Vruink
567 1142 or 027 443 9981
Bookings Required by June Club Night

ZukiCentral 2014 **by Steve Mercer**

ZukiCentral 2014 has been and gone. The third such Easter event run by the Suzuki owners of the Wellington Cross Country Vehicle Club was a total success and proceeds of the event were all to be donated to the Wellington Ronald McDonald House charity. Suzuki owners signed up from all over NZ. Four had come from Hawkes Bay, one each from Taihape, Nelson Christchurch and Western Australia (via truck stored in Christchurch) and there was even a little LJ80 called Sandy who'd come all the way south from Auckland.

Based in Upper Hutt City, planned tracks were all pretty close by and offered participants the option of "scenic, muddy or bone rattling" - formally called Suzuki, Zooks and Z-Force. After months of planning and more than a few ups and downs, the weather bulletin for Easter was a bit daunting. Storm clouds literally broke over all New Zealand on the Thursday dealing the West Coast from Nelson to Haast heavy flooding and extreme winds while cars were swept off Tamaki Drive in Auckland. It took me three hours to pitch my 30 second tent at event HQ in Upper Hutt and I got soaked through. It was a fairly decent Wellington gale blowing with regular showers but once the sun went down, the wind eased up, the rain stopped and my concerns waned.

Day 1: Good Friday. A beautifully sunny and calm day. Registration and scrutineering was all done at the Upper Hutt City Rural Fire depot and by midday 20 of the 27 registered trucks were heading toward the Wel-

lington South Coast for the first outing. Normally, South Coast trips stay at sea level from Red Rocks but CCVC trip leader Barry, through his good relationship with the Wellington City Council, had gained permission for us to drive through the Te Kopahu Reserve tracks that start just south of the city tip and climb up above the South Wellington coast providing spectacular views back in to the city and across the Straits from the inland Kaikouras north to the Marlborough Sounds. Navigating along ridges that meander parallel to the coast, the team ended up at the start of Long Gully Station where owner Steve Watson had granted us access down to the coast through his locked gate. AJ took over leading the trip while Barry and son Tony turned back along the coast and returned to his batch to join me and Liz who'd trailed in the BBQ and tucker for the team's end of trip refresh-



Wellington's South Coast - photo Chris Mackie

ments. It made for a special day especially after Barry had warned me of how unpleasant it can be at his batch in any sort of wind – good thing there wasn't any.

Day 2: Akatarawa Forest

The Akatarawas are the jewel in the Wellington 4WD crown. Accessible from Upper Hutt, Porirua, Paraparaumu and Waikanae, there are kilometers of tracks for all types of vehicles and foot and horse traffic. Through the Akatarawa Recreational Access Committee and good club relationships, 4WDers can roam most of the posted tracks in the forest from Shiny to Hard Yakka. Our 27 trucks split up in to three groups with Murray, Graeme and me leading, the intention was to go our own way and meet up at various key "smokko" spots. The shiny and muddy mob entered the park on the Upper Hutt side while I took the Z-Force team over Moonshine Rd and entered at the Porirua gate on Cooks Rd. We cut straight across the forest to the Long Crossing and on up north to do the Firewood Loop which snakes off Whakatikei Rd. It's a short loop that takes on average 4 hours to complete. There's bogs and steep climbs. Enough to keep most hard yakka jokers happy and that seemed to be the case with Nigel, Wayne, John (all from Hawkes Bay) and Ross (Western Australia). All was going well until Ross's front end started making fairly serious noises during a long winch. Ultimately his front diff pinion had come loose (although he thought he'd done a CV). He soldiered on but ended

(Continued on page 14)

(Continued from page 13)

up having to run in 2WD – fairly hard to do in the FW loop. It was a real shame as Ross had travelled a long way to be with us. He was still able to carry on but we needed to get him out of the forest and to a parts place before the end of the day. We broke for lunch at the half way point and got surprised by a group of Kapiti trials bike riders who don't need tracks. Nigel knew them and caught up with a mate who was doing his final training ride before heading to Europe to do the "Scottish". The remaining part of the Firewood was technical and generally down hill. Ross needed a bit of assistance over tight turns plus wet tree roots and then the track finished with a very steep "first gear - no brakes" ride back on to Perhams Rd. We did carry on investigating the Whakatikei For-



Akatarawa Forest - photo Chris Mackie

est a couple of different ways before heading south to exit the forest at the Totara Park gate in Upper Hutt. Ross got his CV parts with minutes to spare but later that night, once he'd opened up the front, he was to discover more serious damage that couldn't be fixed with what we had. He assembled it all and it remained outside his cabin in 2WD for the rest of the weekend. Never mind I had space for him beside me in the green Samurai.

Day 3. The Suzuki and Zook trucks headed off to Orongorongo Station to take in another coastal station while Z-Force returned to the Akatarawas for more mud and winching fun. This time we went in at the Upper Hutt gate. Straight up Cannon Point and then immediately off the main track down to Clark's Creek, a short diversion from Valley View Rd. The Zooks did this track the day before and a coily Samurai came unstuck on the final climb out of it. Jezza was with that group but overnight we promoted him and he was able to point out where tricky happenings occurred.



Akatarawa Forest - photo Jeremy Wood

Jezza was so busy pointing these out that he too lost traction on that final climb and needed to christen his winch with its lovely blood red rope. He redeemed himself pretty quickly by helping the Trip Leader regain his bearings on Lindsays Road. Its amazing how different tracks look after they've had the trees removed!

Off we headed to the northern parts and after having a quick smokko at the Orange Hut, we tackled the Ruts Track. This track runs parallel to the main backbone road of the forest, Hydro Valley

Rd, but as its name depicts it's a track with deep ruts and even deeper mud holes. There's three separate sections starting with two sections of Ruts and finishing with the rather under lightly described Slippery Forest.

The Ruts start with a horizontally challenging short section which requires a fair bit of power and traction to negotiate and then you end up flopping into a mud hole which Zukes appear to float in (pic of my samurai above). A quick bit of winching and careful driving gets you out and if you're nimble (like most Zukes) you're quickly through the main Ruts and carry on through closely packed dense bush, down a fairly impressive rock

(Continued on page 15)

(Continued from page 14)

face into a stream and then you've nearly through to the second section which features a very long slippery slidey downhill and into the third section – Slippery Forest. This is a series of five deep bogs with stinky water, deep enough to go over the tops of your boots inside the car! It was a challenge for most of us to drive and the winches were required much of the time.

Coming out of this section we arrived at the bottom of the Fenceline Track (which we used to take Shinys up, a couple of years ago). Now its more serious to Club truck with some fairly tricky sections that can easily flip a Zuke on its side.

At the top is a great lunch spot but this day it was shrouded in misty rain and not really worth hanging around in. We drove through the top of the Whakatikei Forest and down the hill to skirt around the Manufacturers Challenge area.

John had been having trouble keeping his mud tyres from coming off the bead and compounded with a slight overheating problem we decided to call it a day and head back to Upper Hutt ensuring we'd be well in time for the prize giving at a local curry house we had booked out.

Prize giving.

Thanks to all our generous sponsors we had sufficient spot prizes for every driver to be able to take home a tactile memory. Thanks to **G Guy Motors, All Fire Safety, Apparel Master Manawatu, Upper Hutt Tyres, Suzuki NZ** and **Suzuki Racing Hawkes Bay**, for all the donated goodies. We also had some extras to auction off and two special prizes that M.C. Ralph decided would be won by the Heads – Tails method which quickly decided the winners. It was a great night, the curry was delicious and Ronald McDonald house was the winner over all.

Day 4. No sore heads in the morning and still plenty of running Zukes that were keen to motor on. The Suzuki Class had all sensibly retired homeward but that freed up Murray to tag along with the Zuke group and put his newly certified Samurai to the sword.



View of the Kapiti Coast - photo Chris Mackie

Both groups headed into the Akatarawa Forest again and agreed to meet up for lunch above the Fenceline track. Again, I took the Z-Force team in through the Porirua entrance and we headed up Puketiro Rd to the

(Continued on page 16)

(Continued from page 15)

top, meandering down to Curtis Flat and then on to the beautiful, but not challenging Wainui Stream (my favourite 4WD track). From the end of the stream track we headed up the Hydro Rd zig-zag – a real challenge for any cooling system clogged with mud from the previous three days of Akas bogs. Fortunately we all made it to the top without losing coolant and while taking in the view from the lookout under the top pylon, sufficient time was spent to allow the hotter engines to cool back to normal again.

Off we headed again and didn't dwell at the Orange Hut, instead going the reverse way to **Day 3's** descent from the Whakatikei Forest. A quick radio call to the Zook team indicated they were close by – so close, we nearly collided as they emerged from a side track I was just about to head down. Pleasantries exchanged, we went up the way they'd come down and were very soon sharing the mornings adventures with them while taking in the glorious views of Kapiti Island that were blocked to us the day before by low cloud.

Once up there we broke into beautiful sunshine and came across the Zuke team sunning themselves and having lunch. We shared the moment with them and took in the great views west to Kapiti Island.

As it was Monday and some of the Zukers had hefty distances to tackle to get home, we turned around and headed for HQ to breakdown tents, pack up trailers and get the little trucklets home.

It was a fantastic event to be involved with especially raising a tidy sum for a deserving charity. Same manufacturer events are a great way of improving the sport and encouraging recent owners to become adventurous. We had hoped to recruit more new Jimny owners as these are the cheapest and most capable stock 4WDs on the market. They retain the original 4WD concepts of capability and simplicity. They are reliable and popular but we didn't really get the message out well enough.

Oh well, there's always 2016.



NZFWD CONFERENCE/AGM

Saturday 24th May – Sunday 25th May 2014

Venue – Waipuna Hotel Conference Centre, Auckland

Attended by: Morris Jury
John Vruink

Well Saturday morning saw John and I on the red eye special (yes Jetstar have one and yes it was on time) to Auckland. Registration was at 9am with the conference commencing at 9:30. First up was an opening address/welcome from Tony Burgess out-going president.

Next up was Tinaka Mearns from DOC. This was well received in the fact that DOC are now becoming more customer focused. They have a National Recreation Forum of which the NZFWD Association are part of. We need to thank Roger Seymour, NPRO, Brent Samson, CZPRO and Andy Cockcroft, ARAC for the excellent work in the relationship building with DOC. May these important relationships continue.

We were then taken through the association insurance by Tina from AON and Judith from Vero. Basically broken down into three main policies:-

Public Liability	-	Liability to others
Statutory Liability	-	Defence only
Law Safe	-	Reparation paid not fines

Further notes from this presentation to follow – NB: **Please remember only club sanctioned events are covered.**

Green Party came to visit, interesting yes, just not convinced on where we will be able to charge our truck batteries in the AKA's!

Discussion from Ken Adams – LVVTA. Nothing new to report and. Issues appear to be on the decline – Status Quo re certification. Watch this space????

Re Public Access NZ – quick over view provided – visit www.panz.kiwi.co.nz

(Continued on page 17)

Fresh Water Pests – yep Didymo? A most information presentation on what we can do. What is Didymo? It's a diatom (algae). It arrived into the South Island in 2004 - it is believed to have come from North America) and we now currently have 187 affected waterways. Good news 400 are currently not affected. The North Island is still currently Didymo free. **REMEMBER** – CHECK – CLEAN – DRY as it can be spread by a single drop-let of water. If you are down south three things to think of:

- Moving between waterways - yes plan lay days
- Use one river catchment, don't cross several catchments
- Cross slowly, keep the water movement slow

Keep an eye out as trail torque will be out on 6th June. Watch your Inbox.

Sunday was the AGM. There was a change in the executive with Neville Dunton taking over the driving seat as our new president. Affiliation fees remain at \$30 per year with \$6 paid back to the zones. The Association is in great shape as we move into the new financial year. There are other changes within the executive. We will cover these off at the next club night.

2015 Conference/AGM venue to be advised, target dates are Saturday 24th – Sunday 25th May 2015.

Apologies for the quick overview, I need to have it to Alan by Friday evening for the club magazine. Where has the week gone!

Regards,
Morris Jury & John Vruink

PS: It was one heck of a landing back into Wellington on Sunday night. Not the worst but enough to give the Mac's Ale from the night before a shakeup.

PSS: Sorry for those that are wondering Roger Seymour is still our National PRO, well done Roger on a great job in the previous years.



For Sale

Suzuki Vitara 1992

- New Zealand new
- Manual – 5 speed
- WOF & REGO
- Hi-Lo Transfer Box
- 1600cc Motor (not fuel injected)
- Basic Model, no power windows or steering etc
- Up Rated Springs
- Bridgestone Mud Tyres (near new)
- Tow Hooks Front & Rear
- Tow Bar
- Stereo
- Rear Seat (can easily be removed)
- Clutch Recently Replaced

Set up with A-frame so can be towed behind a camper / bus.
Very reliable and capable 4x4, set up to meet CCVC (4x4 club) safety check.



\$3500.00

Contact Ralph

021 494680 or 5265119



17 April 2014

John Parfitt
Cross Country Vehicle Club
PO Box 38-762
Te Puni
Wellington

Dear John, Ray, Ralph, Graeme and everyone else

Great Outdoors Summer events 2014

On behalf of the Greater Wellington Regional Council I would like to take this opportunity to say **THANK YOU** to you and the Cross Country Vehicle Club for your contribution in making the 2014 Great Outdoors Summer Events programme a huge success.

This year we have had over 14,500 people into the regional parks as part of the programme.

Thank you for taking the time to coordinate the 4WD Sunset Tours, Mt Climie 4WD trip and the 4WD Back Country Akatarawa. Below is some feedback from the events:

Mt Climie, what did you enjoy: *"The organisation, the kick-ass coffee, the drive itself, great views, awesome weather, fabulous parks, council, 4WD staff, the others punters, bloody everything".*

4WD Akatarawa, what did you enjoy: *"the access to be able to engage 4WD".*

Planning will be underway for the 2015 programme towards the middle of the year. If you haven't completed the partner feedback form already, we would love to hear any ideas you may have for making next year even better.

I look forward to working with you again next year.

Yours sincerely

Mitch (Michelle) Carroll | Events Advisor, Parks Department
GREATER WELLINGTON REGIONAL COUNCIL
Te Pane Matua Tairāo

Shed 39, 2 Fryatt Quay, Pipitea, Wellington 6011 | PO Box 11646, Manners St, Wellington 6142

Tel: 04 830 4282 | Cell: 027 287 8469

www.gw.govt.nz | www.mellink.org.nz | <https://www.facebook.com/GreaterWellington>



www.wgtn4wd.co.nz



Repairs and maintenance of all
off road vehicles.

Modifications a speciality.

CCVC safety inspections

Contact Carl at
Wellington 4WD Specialists Ltd
26 Hawkins Street
Lower Hutt

Phone (04) 976 5325, Fax (04) 976 5313
or 027 201 2529

THIS COULD BE YOUR PAGE!

Go on – step outside your comfort zone and write something for the magazine. Even just a few sentences. You don't have to have been stuck or done anything embarrassing, the rest of the members just like to read your perspective on anything related to the club.

SO WHAT CAN YOU WRITE ABOUT?

How about a trip report? So you enjoyed the trip and would love to share your experiences but are not quite sure who was on the trip or where you actually went.

Call the trip leader and they will give you the details you need to tell your story. It can be as long or short as you want - even a couple of sentences will be well received.

Not sure you want to write a whole report, but want to share that silly / funny incident or dob a friend in? Send a mole report to mole@ccvc.org.nz and it might end up in "The Mole Report", a new section of the club mag.



Writing not your thing?

How about sending some photos for club night. We are keen to have a selection for photos for each trip so here are some guidelines to make it easy for everyone:



Try to pick your best dozen or so photos – we can't show too many on the night so lets make it the best ones.

Photos need to be with me before 8:30pm Monday night. That way I can set them up on Monday night and get them to John on Tuesday night so he can get them ready for Wednesday night.



If you can do so, resize the images to 1152 x 864 pixels (or use a lower resolution setting on your camera). This makes the images small enough to email to david.coxon@xtra.co.nz. Alternatively put your pictures on a CD and call me to arrange to get the CD to me. My contact details are:

463 4263 (w)

567 4501 (home before 8:30)

027 451 0361 (m)

Date	Name	Organiser	Category	Place
June 2014				
Saturday 7th	Sutherlands Track - Bookings Required	Andrew Johnston	Shiny 4X4 / Club 4X4	Sutherland's Track
Sunday 8th	Akatarawa Wander with DC - Book with David - 045674501 Cellphone 0274510361	David Coxon	Family Shiny	Akatarawa Forest
Wednesday 11th	CCVC Club Night - Visitors Welcome. 7:30pm, Petone Working Mens Club, Udy St, Petone	Charles Odlin	Meeting - 19:30	Petone Working Men's Club, Udy St
Saturday 21st	Akatarawa Ramble - Book with Graeme (04) 5267636 or 029 2001700	Graeme Millard	Family Shiny	Akatarawa Forest
Wednesday 25th	CCVC Committee Meeting	Charles Odlin	Meeting - 19:30	Porirua Club
Sunday 29th	Orongorongo Monthly Trip - Book with Morris (04) 566 - 6197 Cellphone (021) 629 - 600	Morris Jury	Family Shiny	Orongorongo area

July 2014

Saturday 5th	CCVC Training Day for Prospective Members - Book With Andrew (AJ) - (04) 568 - 2136 Cell 021 760 238	Andrew Johnston	Family Shiny	Orongorongo area
Wednesday 9th	CCVC Club Night - Visitors Welcome. 7:30pm, Petone Working Mens Club, Udy St, Petone	Charles Odlin	Meeting - 19:30	Petone Working Men's Club, Udy St
Saturday 12th	Planting on the South Coast with WCC - Book with Barry (04) 234 - 7757 Cellphone 0272404530	Barry Insull	Family Shiny	Wellington South Coast
Saturday 12th	Winter 2014 Golden Bay - (Fully Booked)	Murray Taylor	Shiny 4X4 / Club 4X4	Top of the South Island
Sunday 13th	Akatarawa Ramble - Book with Graeme (04) 5237636 or 029 2001700	Graeme Millard	Family Shiny	Akatarawa Forest
Saturday 19th	CCVC Awards Dinner - Bookings Essential (Use Wild Apricot Database to book)	John Vruink	Event	Petone Working Men's Club, Udy St
Saturday 26th	Orongorongo Monthly Trip - Book with Morris (04) 566 - 6197 Cellphone (021) 629 - 600	Morris Jury	Family Shiny	Orongorongo area
Wednesday 30th	CCVC Committee Meeting	Charles Odlin	Meeting - 19:30	Porirua Club

August 2014

Wednesday 13th	CCVC Club Night - Visitors Welcome. 7:30pm, Petone Working Mens Club, Udy St, Petone	Charles Odlin	Meeting - 19:30	Petone Working Men's Club, Udy St
Saturday 16th	Akatarawa Ramble - Book with Graeme (04) 5267636 or 029 2001700	Graeme Millard	Family Shiny	Akatarawa Forest
Monday 18th	Trip Leaders Forum	Steve Mercer	Meeting - 19:30	All Fire Safety (Pete Kings), 3 Matiu Close, Elsdon Porirua.
Wednesday 27th	CCVC Committee Meeting	Charles Odlin	Meeting - 19:30	Porirua Club

Trip Categories

The following trip category definitions, plus any *additional* requirements specified on individual Trip Information Sheets, will be enforced, for safety reasons. Trip Leaders will turn away vehicles or drivers that do not comply. The vehicle and driver requirements given here are a summary of the full requirements listed on the club website. Please refer to www.cvc.org.nz for a definitive list of requirements.

For all Categories: All open or soft-top vehicles must have a roll bar or roll cage.

All Categories **other than Family 4X4** are for members only. Prospective members and visitors are welcome if they can demonstrate to the Trip Leader they are members of another club and have adequate experience.

Family 4X4:

Description: Family trip. These trips will be straightforward and will usually include some degree of guidance in driving techniques as necessary.

Drivers: Particularly suited to family outings and drivers new to off-road driving, this category is also open to anybody who enjoys this style of trip.

Members: Anybody is welcome, especially prospective new members.

Vehicles: An important objective is minimal challenge and minimal risk to vehicles. Club safety equipment is mandatory for club members; it is not mandatory for non-members although it is recommended for vehicles once their drivers have participated in one or two trips. All open or soft-top vehicles must have a roll bar or roll cage.

Shiny 4x4:

Description: More difficult family trips, for shiny wagons and drivers *with some experience* who want more challenge and don't mind minor bush marks etc on their vehicles.

Drivers: Must have some experience, particularly important are experience in stopping, failed hill climbs, steep descents and sidelings. Club members must have completed CCVC Driver Training and participated in at least 2 Family 4X4 trips after becoming a member.

Vehicles: Vehicles must have mud tyres, tow hooks and all the required equipment per the club's document "Vehicle Safety & Equipment Inspections". This applies to all vehicles on the trip.

Club 4x4:

Description: Challenging trips, for experienced drivers. There will be steep and challenging terrain, modestly deep water and mud, likelihood of bush marks.

Drivers: Must have experience beyond that required for Shiny 4x4 trips, including water crossings and vehicle recovery. Club members must have participated in at least 2 Shiny 4X4 trips.

Vehicles: Must have mud tyres, tow hooks and all the required equipment per the club's document "Vehicle Safety & Equipment Inspections". This applies to all vehicles on the trip. Accessories such as high-lift jacks, externally mounted spare tyre, bush bars and multiple jacking points are of advantage. Winches are often particularly useful. Generally a short wheelbase vehicle is better suited for the tight tracks.

Hard Yakka:

Description: Difficult trips with very challenging terrain and surfaces, where winching, digging, and vehicle damage are all a possibility!

Drivers: Experienced drivers only, must have approval of Trip Leader. Club members must have participated in at least 3 Club 4X4 trips.

Vehicles: As per the Club 4x4 category. In addition, a roll-bar or roll-cage is recommended for all vehicles on Hard Yakka trips. Often a winch is mandatory on a Hard Yakka trip; this will be specified on the Trip Information Sheet

Autolign

THE STEERING & SUSPENSION SPECIALISTS

For all your suspension and steering requirements contact:

12 Petone Avenue
Petone
Lower Hutt

Ph. 586 7413



Are you a new member? Do you get the News emails from the club? Do you have access to the club's web-site memberzone? If not then have a word with a committee member as these are all ways in which the club communicates with it's members. Some useful email addresses are:

- Webmaster@ccvc.org.nz (general web site queries)
- Lists@ccvc.org.nz (person who administers the list servs)
- Trips@ccvc.org.nz (Trip Coordinator)
- Newsletter@ccvc.org.nz (to send stuff to the newsletter editor)
- Database@ccvc.org.nz (membership database administrator)
- Access@ccvc.org.nz (Chairman of the Land Access Management Committee)
- NZFWDAdelegate@ccvc.org.nz (NZ Four Wheel Drive Association delegate)
- Treasurer@ccvc.org.nz (club treasurer)
- Welfare@ccvc.org.nz (club welfare officer)
- David.coxon@xtra.co.nz (Club night photo submission)
- Helpdesk@ccvc.org.nz (any general questions)



Editorial Ramblings

WANTED: Society Gossip, Scandal, Rumour, and if all else fails, TRIP REPORTS and NEWS! Photos also very welcome

Well this is my last newsletter for a few months as I am off on another "Big OE" - doesn't seem like the last one was that long ago but it was in 2010 so I think I am well overdue for another! Anyway Terry Hughes is looking after the editorship for the next few months and my next one will be the September issue.

If anyone wants to follow my travels I will try (free wifi dependent!) and keep a blog, the address is:

<http://alans-big-oe.blogspot.co.nz/>

Till September, keep the trips running and the trip reports coming in to newsletter@ccvc.org.nz

Alan...

ACTION TYRES

Call (04) 939 2284

Cars

Vans

4x4's

Tyre Service & Repairs

Commercial Vehicles

Industrial Equipment

Welcome to **ACTION TYRE CENTRE LTD** where you will find great service, and great prices along with friendly staff.

We are here to help you find the right tyre fit for your vehicle at affordable prices. We'll fit them while you put your feet up, relax and have a coffee in the waiting room.

We fix punctures, do wheel alignments, balancing & fitting. We also have fleet servicing for all your business needs. Drop in or give us a call on 04 939 2284.

Tyre & Puncture Repairs, Tyre Fitting, Wheel Balancing, Wheel Alignment
Mag Wheels and Fitting, Battery Check and Replacement

For cars, vans, 4x4's, light and heavy commercial vehicles and also industrial equipment.

Eftpos, Master and Visa cards accepted

About us:

We are a family business that employs a dedicated team to provide friendly and excellent service.

Action Tyre Centre Ltd has been in business for over 20 yrs servicing local and regional public and commercial vehicles.

With over 40yrs experience in the tyre business, Phil is committed to bringing you the best. We are able to source all the quality brands.

We enjoy being part of the Lower Hutt community.



GOODYEAR



Action Tyres - 7 Wareham Place - Seaview - Lower Hutt - (04) 939 2284

