



VEHICLE CLUB
Wellington

Cross Country Chronicle October 2016



LAW OF MECHANICAL REPAIR

After your hands become coated with grease
your nose will begin to itch,
and you'll have to pee

The Official Magazine of

The Cross Country Vehicle Club (Wellington) Inc

PO Box 38-762, Te Puni 5045, Wellington

www.facebook.com/wellingtonccvc/

The club meets at 7:30pm on the 2nd Wednesday of each month at the
Petone Working Men's Club

www.ccvc.org.nz

ACTION TYRES

Call (04) 939 2284

Cars

Vans

4x4's

Tyre Service & Repairs

Commercial Vehicles

Industrial Equipment

Welcome to **ACTION TYRE CENTRE LTD** where you will find great service, and great prices along with friendly staff.

We are here to help you find the right tyre fit for your vehicle at affordable prices. We'll fit them while you put your feet up, relax and have a coffee in the waiting room.

We fix punctures, do wheel alignments, balancing & fitting. We also have fleet servicing for all your business needs. Drop in or give us a call on 04 939 2284.

Tyre & Puncture Repairs, Tyre Fitting, Wheel Balancing, Wheel Alignment
Mag Wheels and Fitting, Battery Check and Replacement

For cars, vans, 4x4's, light and heavy commercial vehicles and also industrial equipment.

Eftpos, Master and Visa cards accepted

About us:

We are a family business that employs a dedicated team to provide friendly and excellent service.

Action Tyre Centre Ltd has been in business for over 20 yrs servicing local and regional public and commercial vehicles.

With over 40yrs experience in the tyre business, Phil is committed to bringing you the best. We are able to source all the quality brands.

We enjoy being part of the Lower Hutt community.



Action Tyres - 7 Wareham Place - Seaview - Lower Hutt - (04) 939 2284



WHEN HELP IS NEEDED

Should any members fail to return from any outing, four wheel drive or otherwise, whether as a club member or as a private individual, the following person/s should be contacted in the first instance:

Anthony Reid 973 8262 or 027 273 6579 or 021 061 1831

Morris Jury 566 6197 or 021 629 600

Table of Contents

Cover	Sadly very true!
P. 3	Help, Index, Safety Inspectors
P. 4	Upcoming National Events
P. 5	2016 Award & Certificate Winners
P. 6	Huntermville / Taihape / Ruahines
P. 12	GWRC & UHCC Events
P. 13	Club Champs 16 Oct 2016
P. 14	ARAC Newsletter
P. 16	Akatarawa Map
P. 20	Ahuroa Safari 2016
P. 22	Club Roll of Honour
P. 23	Trip Categories
P. 24	Upcoming Club Trips

Vehicle Inspectors

Dayal Landy

Gold Coast Mechanical
2 Epiha St, Paraparaumu
Ph. 04 902 9244

Antony Hargreaves

Epuni Motors 1987 Ltd
Hawkins St, Lower Hutt
Ph. 04 569 3485

Dave Bowler

Pete Beckett

Bowler Motors Ltd
11 Raiha St, Porirua
Ph. 04 237 7251

Grant Guy

G Guy Motors
61-63 Thorndon Quay, Wellington
Ph. 04 472 2020

Carl Furniss

Wellington 4WD Specialists
3 Downer Street, Lower Hutt
Ph. 04 976 5325

Shane & Carl

Mendoza Mechanical
34 Goodshed Road, Upper Hutt
Ph. 04 527 7274



NB: Please remember to call and make an appointment before turning up for an inspection!

MAGAZINE CONTRIBUTIONS

This is your magazine so it can only be as good as the contributions you make!! We need any articles, trip reports, technical items, "How-to's", etc to be in the hands of the editor by the end of each calendar month.
Please email to newsletter@ccvc.org.nz or post to 34a Hine Rd, Wainuiomata or fax to 04 914 8366.

DISCLAIMER: The opinions expressed in this magazine are those of the contributors and not necessarily those of the club, it's executive or committee members. Publication of maintenance techniques or mechanical modifications should be weighed against generally accepted procedures and the Club should not be considered an authority in this area.

Upcoming National Events

Oct 14-15: Mainland Winch Challenge Round Six

Dunedin, event held at Cedar Creek site. Friday night stages, Saturday day stages. AGM before event starts. For more info email Vicky at mainlandwinching@gmail.com

Oct 21-24: Off Road Racing Championship

Final to be held at Twizel. Short Course and Enduro. www.oranz.co.nz

Oct 22: Novawin - Battle of the Palace 2016

Norwest OHV Club Inc is once again hosting the 'Battle of the Palace' Teams Event at Possum Palace over Labour weekend. THIS IS A CLOSED EVENT AND NOT OPEN TO THE PUBLIC OR SPECTATORS. Any questions just ask or if you would like an entry form please contact: <https://www.facebook.com/events/889052261240729/>

Nov 12: Porter Group 4x4 Trial Round One

Round one of the National trial season is being held at Karakariki, just a short drive from Hamilton on the way to Raglan. Spectators \$10 adults, \$25 family. Fun day out watching extreme 4x4 vehicles go head to head.

Nov 12-13: Annual Ahuroa Volunteer Fire Brigade Fundraiser

By Rodney Offroad Club. Annual event held at Ahuroa. Usually two options Club and Shiny. Contact rodneyoffroad-club@gmail.com

Nov 25-26: Manukau Winch Challenge

Hosted by Manukau 4WD Club. More details very soon.

Dec 04: Whangamata Matariki Forests Tagalong Charity Event

Round one of the National trial season is being held at Karakariki, just a short drive from Hamilton on the way to Raglan. Spectators \$10 adults, \$25 family. Fun day out watching extreme 4x4 vehicles go head to head.

Dec 10-11: Operation Sterling 4x4 Two Day Safari

The dates shown are confirmed but subject always to NZ Army requirements regarding Army activities. All bookings must be made online. This guided tour is strictly limited in numbers and bookings are on a first received basis. There will be two options available for accommodation and meals; Barrack accommodation and meals: You sleep in Army barracks on Friday and Saturday night, plus receive Army cooked meals on Saturday and Sunday morning and a cooked meal on Saturday night. You will be provided with a cut lunch for Saturday and Sunday. Self-catering and camping: On the Sports ground just down the side road from the Army Museum and provide all your own meals. Showers and toilets will be supplied.

Dec 17-18: Waiouru Safari - 2 Day Guided Quad/Side-by-Side Safari

The dates shown are confirmed but subject always to NZ Army requirements regarding Army activities. On Saturday the event will be based near Lake Moawhanga. The site is very picturesque. The trails are just brilliant. Course Number one. This course will be about 25-30 Kms in length. It will be designed for the more experienced driver with some fast sections. Course number 2 will be about 25-30 kms and will be tailored and restricted to drivers who wish to have some time in the seat at normal speeds. Course 3 will be a short 4-5Kms course specially designed for demonstrating the many Can-Am Models. Sunday a guided Safari with three different groups to choose from through the 163,000 acres of Waiouru military training area. The event is specifically designed for quads (4wd) and side-by-sides. There will be three groups to choose from so you will never be out of your comfort zone while you explore this Alpine wonderland.

Feb 12: Riversdale Surf Lifesaving 4WD Fundraiser

Hosted by Wairarapa 4x4 Club. Over local farms including Flat Point, Homewood, Stansborough, Matariki, Orui and Pahutu Stations.



<u>Round</u>	<u>Date</u>	<u>Where</u>	<u>Host</u>
One	Sat 12 Nov 2016	Northern Zone	Waikato 4x4 Club, Hamilton
Two	Sat 10 Dec 2016	Northern Zone	Bay of Plenty
Three	Sat 21 Jan 2017	Northern Zone	South Waikato (Okoroire)
Four	11-12 Feb 2017	Central Zone	Valley
Five	Sat 11 Mar 2017	Central Zone	Mt Egmont
Six	Sat 22 Apr 2017	Central Zone	Manawatu

Some details in this column appear courtesy of Cathy Parker, publisher of the New Zealand 4WD and Sportvehicles magazine. Potential participants should contact the event organiser; CCVC cannot take responsibility for any changes or inadvertent inaccuracies.

Club Awards and Certificates - 2016

Below is the club award and certificate winners for the 2016 year, these were presented at the 2016 Awards Night.

Award

John Philips Trophy – first modified vehicle club champs
Deadwood Cup – best CCVC presented vehicle at Deadwood
Bent Conrod – first CCVC vehicle home at Deadwood
Bob Jeffery Memorial Cup – helping hand
John Findlay Award – trip leader of the year
Ron Wadham Trophy – first standard vehicle in club champs
Presidents Cup – awarded at the discretion of the President
Glengary Award – conservation
Reporters Award – best trip report for the year
Andrew Farmer Memorial Trophy – most active new member
Barbara Blackie Memorial Trophy – most active members partner
CCVC Off Road Cup – first club vehicle in club champs
Grant Kirby Memorial Trophy – inter club events
Deadwood Safari Shield – 2nd CCVC vehicle home in Deadwood
Jean Cameron Trophy – manufacturers challenge

2016

Rob McLean
Steve Lacey
Brian Howat
Ian Hutchings
Frank Allen
Brian Taylor
John Parfitt
Barry Insull
Glenys Feist
Phil Green
Linda Millard
Andrew Gee
Andrew Gee
Steve Lacey
Nil

Certificates

Club Champs Round One Standard Class 1st
Club Champs Round One Standard Class 2nd
Club Champs Round One Club Class 1st
Club Champs Round One Club Class 2nd
Club Champs Round One Modified Class 1st
Club Champs Round One Modified Class 2nd

Brian Taylor
Glen Williams
Nil
Nil
Rob McLean
Brian Howat

Club Champs Round Two Standard Class 1st
Club Champs Round Two Standard Class 2nd
Club Champs Round Two Club Class 1st
Club Champs Round Two Club Class 2nd
Club Champs Round Two Modified Class 1st
Club Champs Round Two Modified Class 2nd

Brian Taylor
Phil Gibbons
Andrew Gee
Nil
Brian Howat
Dean Russell

Club Champs Overall Standard Class 1st
Club Champs Overall Standard Class 2nd
Club Champs Overall Club Class 1st
Club Champs Overall Club Class 2nd
Club Champs Overall Modified Class 1st
Club Champs Overall Modified Class 2nd

Brian Taylor
Phil Gibbons
Nil
Nil
Rob McLean
Brian Howat

For the history of the trophies and their previous winners go to the CCVC Wild Apricot site and check it out under "About Us" and then "Club Awards".

We have been advised that an ex club member Russell Stevens had his Hi-lux stolen Sat night / Sunday morning from Johnsonville.

**1995 3 ltr Hilux / Surf, rego BBZ134
Turbo diesel, Dark Red**

If any one knows its present whereabouts or sees this vehicle could they please advise the Police.

Trip report – Hunterville/Taihape and Ruahines weekend 10-11th Sept 2016 by Greg Byrom

Trip led by David Coxon

Half way down the Ruahines on a particularly steep bit the call came over the radio: “So who wants to write the trip report?” – Deathly silence. So came the next call: “I think it should be the person who nearly got stuck”. As a result here goes.

This was my first trip as a new club member and I’ve never written a trip report before, I’m that guy who turns up with a silver Range Rover to the Family Shiny trips which has never resulted in any responsibility whatsoever before so this is all new to me. David Coxon had it all well planned for a two-day mostly on-road trip in the Taihape/Hunterville area and six vehicles met up at the allotted time of 1pm in the new shopping area of Bulls. I say six because confusingly we were all looking out for a maroon Prado... several unanswered calls for “David” over the radio made us realise that the guys in the corner of the carpark were talking on a walkie-talkie asking for “David” at the same time as we were receiving radio chatter so that must be the group! David arrived around 15 minutes later and after coffee and comfort stops the now seven vehicles set off with David in the lead.



Day 1 (Saturday): David led us to Hunterville where we turned left and took a plethora of back-country roads for the rest of the afternoon. The GPS track will show the details because I have no idea where we were but this is stunning country when you get off the main highways and see the real rural countryside. Someone stated over the radio that this road and the one to the east of Taihape are a good alternative to SH1 if you have the time when driving north or south. The views were incredible as the photos will show and the high points afforded a view to die for. Occasional glimpses of Mt Ruapehu to the North and the snow-capped Ruahine Ranges to the east were interspersed with many photo stops, afternoon tea and just general ambling along. The roads were as David had suggested: mostly either sealed or gravel, nothing difficult. As a result I had left my road tires on the Rangie for the trip to avoid having to drive up on muds, but I carried the muds in

the back with me just in case, with the intent of changing them over at Taihape in the evening for Day 2.

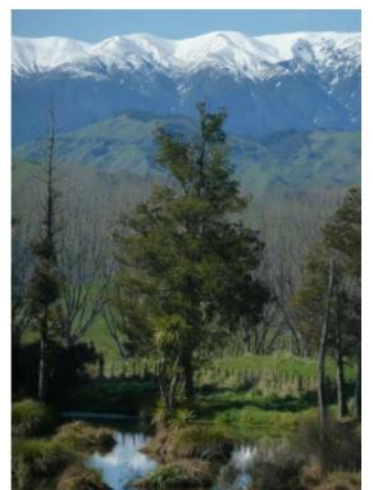


Some stops afforded the opportunity to throw a few snowballs as we got higher into the hills where some of the patches hadn't yet melted in the last day's warmth. The weather prior to Saturday had been fairly bad and there had no doubt been snow up here but it had largely gone by the time we arrived.

After arrival in Taihape at around 5pm we all settled into our various pre-booked accommodation which was just as well as my trip passenger Linda had booked out the last bed in town the night before. I'm fairly sure Taihape was full of skiers too so the few motels and restaurants were doing a roaring trade, with 16 of us turning up to one restaurant in the evening unexpectedly and only one lady doing the serving she did extremely well. A lovely meal and a few wash-ups of the day and we all headed off to watch the All Blacks play the Pumas. I discovered neither Linda's backpackers nor my motel had Sky, so I had it watch it on Prime, by which time I knew the result already via Twitter...



**Day 2
(Sunday):** We all met at the BP in Taihape at 9am mulling over how much diesel everyone had purchased (most people

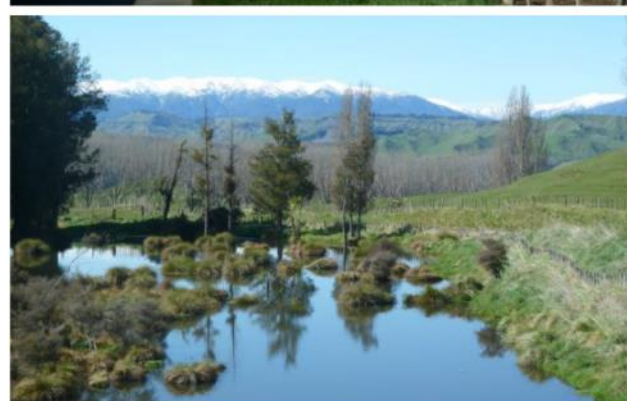


around the \$40 mark) and how cheap the trip had been, I myself had filled up the night before with \$122 worth of 98-octane petrol and the Range was nowhere near empty then. Being the only Range Rover on these trips it's up to me to hold the side up, there's a certain smugness in being the most expensive vehicle to run, somehow I wear it like a crown of pride, though I'm not sure it's justified! I'd spoken to David about the mud tires and decided against fitting them for the day as the roads would be more of the same: either sealed, or gravel with perhaps at worst the odd farm track. If we went up Takapari Road in the afternoon I might change them if there were time.

We set off this time toward the east and the Ruahines, a misty early morning turning to a lovely bright sunny day, there was warmth in the air despite the snow on the tops and more sealed and/or gravel roads to explore. A feature of this day in the brighter sunshine was the incredible bright green of the fields.

It turned out David's club-frequency radio wasn't working so we all stopped so he could borrow a handheld, we tried switching to PRS30 but the quality was nowhere near what the convoy required. With David's GPS leading us we had more stunning scenery and photo stops, this time turning to deep river gorges, views of the ever-closer Ruahines and occasionally a stunning look back to the volcanos. Morning tea was had overlooking a small lake with snow-capped peaks as the backdrop, birds larking about on islands in the lake and absolutely still morning air. We'd resolved to not have so many photo stops this time but I'm not sure our resolve held as the scenery was just too stunning. Eventually we came upon a place for lunch but it was vetoed when someone spotted a dead sheep nearby, lunch and rotting sheep carcass didn't go down too well with my passenger Linda so we headed for another spot which we eventually found.

A DOC reserve appeared with a small track heading off into the bush which I decided was my cue to try a bit of off-roading for the day but the track turned out to be a loop which just came back onto the road 100m or so from where I'd left it, and as it was out of the warm sun, not really worth exploring for lunch. I





With the Rangie unexpectedly spattered in mud I found a slightly firmer piece of ground to park up for lunch and assess the dirt, with another snow-capped mountain backdrop beside the sealed road with hardly any traffic. Photos were taken including the group photo of us all. After lunch we all headed back out heading towards Takapari Road, with the requisite photo stops along the way.

looped it and came back along the road to the start of it where everybody else was already setting up for lunch. I found a nice spot to park up out of the way, pulled the Rangie off the road and onto the grass... but the wheels spun and I couldn't go any further so I snatched reverse to get back to the road... and, this would've been a good time to have those mud tires on. Unfortunately, those were still safely packed away in the back of the truck, and my roadies were just digging deeper. Drive, reverse, drive, reverse... the ground was softer than it looked and she was having none of it. Well, this wasn't expected! We'd only pulled off a sealed road for lunch on a bright sunny dry day and now I'm covered in thick gooey mud and spattering it all over the DOC sign in front of us.

Eventually a bit of V8 welly pulled us back onto the road not without the obvious teasing from the onlookers and mud in the wheel arches and all over my nice Comet road alloys. This was supposed to be a clean, on-road trip and I've never been stuck in all the off-road trips I've done! Well at least the truck looked like it had done some work for the day but this wasn't in the plan...



At Takapari some of the group elected to leave us and head back home, I had expected to do the same but as it was only 2:15pm I decided to tag along up to the A-Frame Hut. The first part of Takapari was looking worse than expected up to the first gate, with deep ruts in the middle of the track which caught out Ashley ahead of me, luckily he knew to keep the hammer down and spun sideways out of it. I was tail-end Charlie on this and at the second gate I forgot my position and Ashley had to remind me to close it. Well, it's my first trip with responsibility... duh.

The views from up on the Ruahines were absolutely stunning. The snow-capped peaks were close now and at times we were driving through snow on the road, though not enough to provide any slippage for us. Takapari is very rocky so there's plenty of grip, but also plenty of challenge and mud-holes. The first stop afforded a view not only of Mts Ruapehu and Ngauruhoe but also of Mt Taranaki! An amazing distance to see it from, and all the countryside in between. The most incredible day to be up there.

At the A-Frame Hut we lined up for afternoon tea and a photo op, before heading back down. That was when the aforementioned fateful call was made. At the bottom of the ranges we headed back along Pohangina Road to finish at the Wind Farm Lookout carpark in Ashhurst, opposite which lives another masochist I know who owns three Range Rovers, one a Classic 2-door in pieces... so I called in for a chat.

Talking of which (you knew I would) a small promotion for the New Zealand Land Rover Forums, which I have started. We have over 400 members the vast majority of whom are in NZ, a website, user forums, Facebook groups, a YouTube channel, and coming soon iPhone and Android apps. If you're a Land Rover owner there's plenty of people to talk to about Landys and ask for or give advice and guidance, as well as helpful overseas experts. Find us on <http://www.nzlrf.org.nz> or let me know your email address and I can add you to the forums. Or visit <http://www.facebook.com/groups/NZ.Defenders> for Defender, Series and Perentie vehicles, or <http://www.facebook.com/groups/NZ.Range.Rovers> for Range Rover and Discovery vehicles.

Many thanks to David Coxon for running the trip to an expert degree of organisation and efficiency and to all the participants it was great to meet you all and thanks for coming!

Greg Byrom, P38 Range Rover ALU323



G. Guy Motors

4WD SPECIALISTS NZ



LEADING BRAND 4X4 WINCHES & ACCESSORIES



Runva Performance Winches. The only winch you will ever need. Competition proven in NZ and around the world year after year.

BEST RANGE - BEST QUALITY - BEST PRICE



Winch Bars, Side Bars, Rear Bars, Roll Bars, Side Steps, Roof Trays, Drawer Systems.

MCC is a worldwide supplier of quality products.

WINCH BARS / BUILT IN SPOTLIGHTS - \$1200!!

For more info 021 535 007 | info@winch.co.nz | www.winch.co.nz | www.mcc4x4.co.nz

SNATCH MASTER

high elongation nylon recovery straps

Minimum breaking load 8,000 Kgs
Offers similar elongation to nylon rope,
but requires less storage space.

Described by users in trials as 'magic,
the best product I have ever used !'

100% New Zealand made

Bring in your club membership card and
receive 15% discount off our Snatch
Strops, Shackles and Chains.

Standard lengths 6.0 metres & 9.0 metres
with special lengths manufactured to order in
either our Auckland or Christchurch factories.

BRIDON

Incorporating

Branches throughout New Zealand
Sales and Service
Free Phone 0508 BRIDON (274366)

Wellington Branch
57 Cuba St, Petone 04 568 4384

COOKES GOUROCK

GWRC and UHCC Events

The following trips are events that the club is helping out the Upper Hutt City Council and the Greater Wellington Regional Council - they will appear in the club calendar

October 2016

Monday 10th UHCC - Mt Climie Sunset Trip

January 2017


Thursday 12th GWRC - Sunset Tour No 1
Saturday 28th GWRC - Bearing Head

February 2017

Saturday 11th GWRC - Sunset Trip No 2

March 2017


Tuesday 7th UHCC - Parks Week event
Saturday 18th GWRC - Akatarawa Tag - a -long



Wellington 4WD Specialists Ltd

3 Downer Street, Hutt Central,
Lower Hutt.

P: (04) 976 5325
M: 021 026 90904
e: sairambatteries@xtra.co.nz




All Automotive Service & Repairs



WOF	Transmission
Vehicle Servicing	Off Road Vehicle-
Engine Repairs	Modifications
Exhaust	CCVC Club Inspections
Air conditioning	Snorkels
Fuel System	4WD Recovery Gear
Tyres	Air Diff-locks
Batteries	Air Compressors
Wheelalignment	Winches
Cooling system	Spot Lights
Clutch Repairs	Roof Racks
Suspension	4X4 Tyres
Brake Service	Performance Tyres



P: (04) 976 5325

CCVC Club Champs on Sunday 16th October

We've got a great day planned for the Club Champs on Sunday! It's at Jeff and Noelene Berkett's in Whitemans Valley - this is a superb site with a good mix of terrain available so we can set up challenges suitable for all grades. The plan is to have the course set with different exits and challenges for standard trucks and modified vehicles. It'll be a fun day and likely to be quite challenging with soft ground after recent rain so you'll definitely need mud tyres - just the way we like it! For those who haven't tried the Club Champs before this is a great way to learn the capability of your truck and to improve your own driving as everything's optional and you can see others driving, plus get plenty of advice before you attempt any sections.

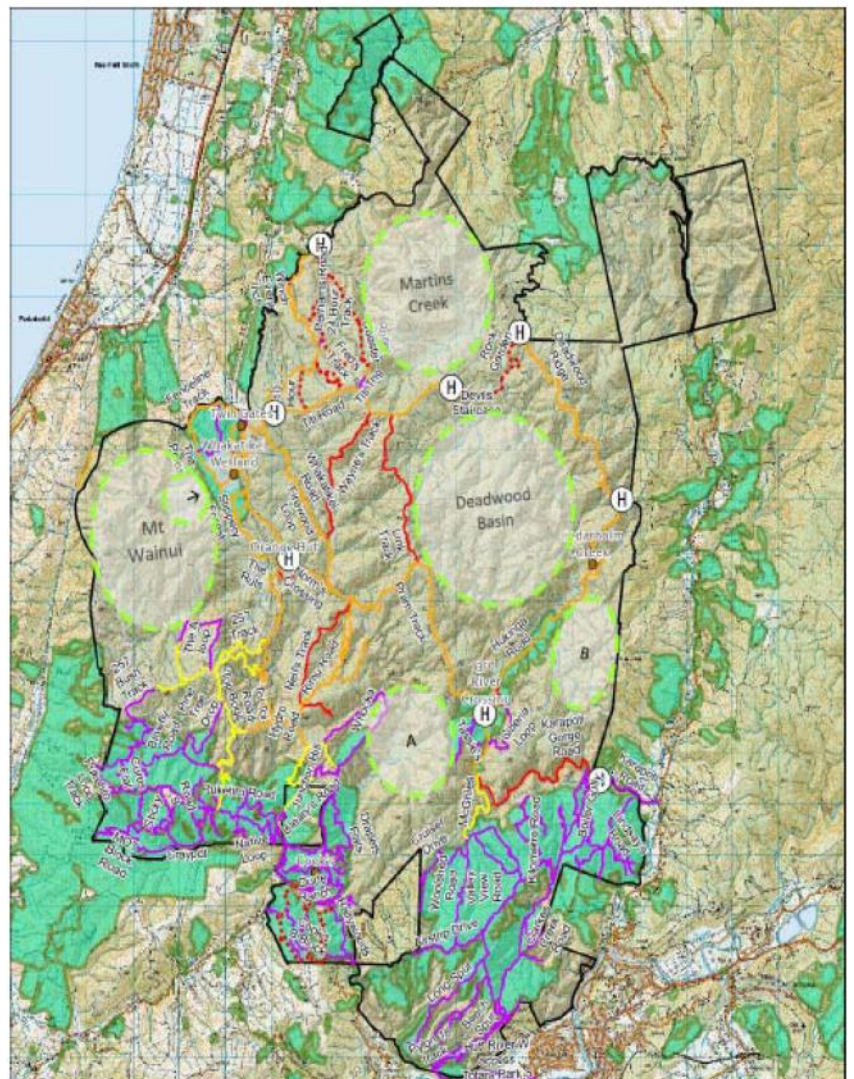
We'll have a BBQ set up to provide a couple of sausages for lunch and will also have the Club pump there to hose your truck down before you leave. And don't forget that by entering you go in the draw for a weekend away for two - this is drawn at the Awards night next year and the last two years we've provided two nights accommodation and a meal for two in Martinborough.

All details for the day are in the Club trip calendar but feel free to call me for any details.

*Brent
021 478 633*

1. Map 20 is Approved by Full Council

So, it's taken nearly 2 years and hundreds of man-hours, but at last on 28 September 2016, a revised Map 20 was officially adopted by Council to replace the one contained in the PNP



2. Karori Stream Impassable (*pro tem*)

As you will see from these photos the track that hugs the cliff face at the mouth of Karori stream is out of action.

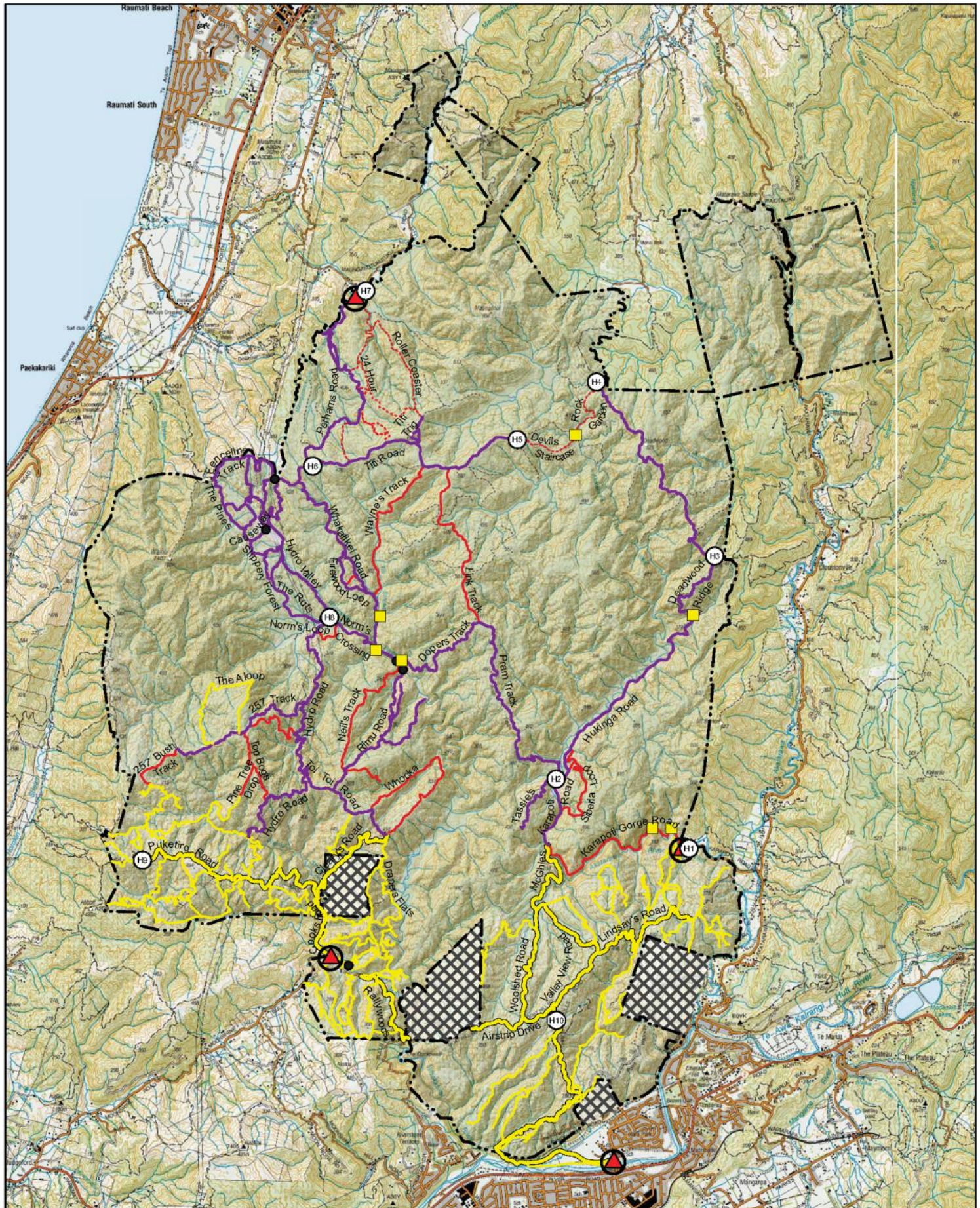
Although the lagoon was drivable yesterday heavy rain in the Karori catchment could change things quite quickly.

You may wish to circulate word to your motorised colleagues.

We will keep you informed if we hear anything substantive.



Akatarawa Forest Motorised Recreation Tracks



- Helisite
- River Crossing
- Park Entrance
- Point of interest
- Expert Route
- Trailbike and Quad Only Track
- Forest road
- GWRC Club Events Only (Minor Roads)
- GWRC Club Events Only (Main Roads)
- Privately Owned Land



This map does not provide for access to any areas outside Akatarawa Forest Park except public roads as shown on NZTopo 50 map.

0 0.5 1 2 3 4 Kilometres

Helisite Coordinate Table

Helisite	WGS84: X	Y	NZTM: Eastings	Northings
H1	175,096	-41,060	1776999	5452471
H2	175,066	-41,047	1773690	5453784
H3	175,100	-41,010	1776590	5450002
H4	175,073	-40,980	1774364	5461292
H5	175,055	-40,991	1773382	5460302
H6	175,010	-40,996	1769045	5459703
H7	175,030	-40,966	1770041	5463016
H8	175,014	-40,991	1769363	5456841
H9	174,974	-41,064	1765953	5452251
H10	175,067	-41,090	1773612	5449222

Who we are and what we do

All Fire Safety Limited is an independent fire protection business.

From our purpose built workshop and offices we service clients throughout the Wellington, Hutt Valley, Porirua, Kapiti, Horowhenua and Manawatu areas. We make fire safety compliance easy for you and ensure that your business, your property and your personnel are well protected and suitably equipped to deal with fire emergencies.

Contact us on 04 237 5059 to receive your free site survey.

Contact Us

3 Matiu Close

Porirua


New Zealand

04-237 5059

Email Us

- Site Surveys
- Fire Alarms
- Fire Extinguishers
- Maintenance, Inspections & Repairs
- Building Warrant of Fitness and IQP Services
- Short term Rental of Fire Extinguishers
- Hoses
- Cabinets
- Fire Blankets

Google Map



BRIEFLY:

1. The club is still missing a PR person, so if you are have a "Public Relations" bent then the club could use your services - nothing too time consuming, just a bit of sponsorship and club benefit negotiations really.
2. The annual Keep NZ Beautiful campaign is about to start so keep an eye out for the usual clean ups that the club does.



CAPITALCOMMS
COMMUNICATIONS & SECURITY

Your Two-Way Radio Specialists!

MEMBERSHIP CARDS

Members should now have all received their membership card for the 2015/16 year. However a few members need to update their address recorded in the membership database so the card can be sent out.

Its easy, <http://ccvcwellington.wildapricot.org> and log in (use the lost password routine if you need to) and update your address details.

The NZ4WD Association has now also printed membership cards and these will be available to pick up at Club night.

CCVC Club Member's Photos and Videos

We are always keen to share club member's trip photos and videos at Club night.

Here are some simple guidelines to make it easy for everyone:

Pick your best 6 to 10 photos , resized to 1152 x 864 pixels (or use a lower resolution on your camera)

Email them with a brief description of event, location, date taken and any notes you would like included to Dave Kibblewhite

email address: verda@xtra.co.nz

OR

Put on a USB stick and contact Dave to arrange collection / dropoff

Always looking for 4WD related video clips, Powerpoint presentations, YouTube listings etc that can be shown on clubnight – we have the technology!

I need all material by 7.00pm on the Monday night prior to Club night to allow sufficient time to prepare the data show. If you have a "ready to show" USB stick with sequenced, correctly rotated photos and or video or Powerpoint presentation ready to show , these could be given to me on the night but please contact Dave prior to arrange.

Any questions please contact Dave

Contact details	Dave Kibblewhite
	43 Tennyson Avenue, Avalon, Lower Hutt
	021 765554 anytime
	04 9398840 work
	04 5770680 home (before 9.00pm)

Upper Hutt Tyres & Batteries

Opposite Railway Station, Princes St, UH



Tyres
Wheel Alignment
Batteries

Nitrogen Tyre Filling

**Finance & Laybuy
Options Available**

528 8836

SUPPORT THE
AHUROA RURAL
VOLUNTEER FIRE
SERVICE

SPECIAL POINTS
OF INTEREST:

- NZFWDA members only
- Free Camping
- Pay online
- Max 60 vehicles
- All registrations by 22nd October
- No payments on the weekend
- Cash Bar only
- Tuff Run Vehicles - must have mud tyres
- Vehicles on Shiny Run must have minimum of good all terrain tyres,
- WOF and Rego recommended for Shiny Run
- All trucks will be checked for safety by RORC scrutineers

VEHICLES
MUST HAVE:

Ahuroa Safari 2016

NOVEMBER 12-13TH



Rodney Off Road Club Inc.

Come and support the Ahuroa Rural Volunteer Fire Service in the North West of Auckland, near the Kaipara Harbour.

It will be a fabulous family weekend of mud, fun and friendship, just like all our previous ones.

Choose from either the Tuff truck or Shiny runs.

Those brave enough can camp and there will be marshmallows for the bonfire.

Confirmation Email will contain more information and directions



This may be our last separate run for the tuff trucks due to land access shortages & issues.



The Line up

Food and Beverages

Included in your entry fee is you and your passengers dinners on Saturday night, and breakfast Sunday morning. Lunches for Saturday can be pre ordered with your entry.

A cash bar will operate for those requiring something a bit stronger than a cuppa.





Lift It, Load It, Tension It, Tie It

Howard Material Handling has been selling industrial lifting equipment and general materials handling equipment in the Wellington region for over 25 years.



Products

HMH Ltd has a core range of lifting and winching equipment, including everything from lever and chain blocks, winches, electric hoists, pulleys, push trolleys and gantries... [read more](#)



Services

If you need to Lift It, Load It, Tension It, or Tie It Howard Material Handling Ltd (HMH) can help. And that's what we have been doing for over 20 years.... [read more](#)



Industries

Take a look at some of the industries that we are heavily involved in. You will see we have experience in many different fields, and we can help you, no matter what industry you are in. ... [read more](#)



Grant Uridge - Plus4 Insurance Solutions

- for insurance that pays out at claims time

Grant realises that many people enjoy talking to insurance brokers as much as they enjoy a visit to the dentist!

But at least with Grant we can talk about the slips down Odilins Road or what's the best winch to have!

But getting the most competitive premiums, quality policy wordings and best products for life, health, income and trauma insurance can save you hundreds or thousands of dollars over time.

While Grant Uridge at Plus4 cannot guarantee every claim is paid. He will make sure that you

know what you are covered for and, in the event that there is a problem, will go the extra mile to get it sorted.

Grant makes sure that you have sufficient cover, at the best prices, so that if the unthinkable happens, you and your family can carry on and avoid a financial catastrophe.

Remember, insurance is all about the claim.

For insurance from someone who will talk your language talk to Grant Uridge, 027 448 8689, 04 976 1099 or grant@plus4.co.nz



Every CCVC member taking insurance with Grant receives a free emergency kit

A copy of Grant's Disclosure Statement is available free of charge.

Cross Country Vehicle Club

Roll of Honour

THE ROLL OF HONOUR CELEBRATES LIFE MEMBERS OF THE CLUB
WHO HAVE PASSED AWAY

Bob Jeffery
George Bean
Peter Boniface
Ron Oliver
Vern Lill
Steve O'Callaghan
Ron Wadham

Member Information:

Bob Jeffery Steward 1982

George Bean Treasurer 1972, 73, 74, 84, 81, 82, 84, Steward 1976

Peter Boniface Not listed as a committee member

Ron Oliver Initial President in 1971 the President 1972, 73, 74

Vern Lill Committee 1974, 76, Steward 1975, Delegate 1977, 78, Vice President
1979, 80

Steve O'Callaghan New Members Officer 1999 till 2015

Ron Wadham Safety Officer 1997, 98, led many CCVC trips

CCVC Life Members

Tom Adams	Graham Barr	Leith Bean	Stuart Brown	Andy Cockroft
Owen Farghar	Mike Gall	John Hughes	Heather Jeffery	Ron Johnson
Steve Lacey	Colin Landy	Phil Lewton	Bruce Mulhare	Raynor Mulhare
Peter Osborne	Ross Perkins	Grant Purdie	Tony Street	

CLUB RADIO CALL SIGNS

The Club uses a series of radio call signs in the Kxxx series to meet our licence requirements. Once you get on a trip you soon know what call sign is tail end charlie etc for the day. But basically if you don't yet have a Call Sign you are not authorised to use the Club radio licence.

Call signs are available to financial members on request to database@ccvc.org.nz

So if you have purchased a suitable radio for CCVC use, make sure you get a call sign allocated.

Trip Categories

The following trip category definitions, plus any *additional* requirements specified on individual Trip Information Sheets, will be enforced, for safety reasons. Trip Leaders will turn away vehicles or drivers that do not comply. The vehicle and driver requirements given here are a summary of the full requirements listed on the club website. Please refer to www.cvc.org.nz for a definitive list of requirements.

For all Categories: All open or soft-top vehicles must have a roll bar or roll cage.

All Categories **other than Family 4X4** are for members only. Prospective members and visitors are welcome if they can demonstrate to the Trip Leader they are members of another club and have adequate experience.

Family 4X4:

Description: Family trip. These trips will be straightforward and will usually include some degree of guidance in driving techniques as necessary.

Drivers: Particularly suited to family outings and drivers new to off-road driving, this category is also open to anybody who enjoys this style of trip.

Members: Anybody is welcome, especially prospective new members.

Vehicles: An important objective is minimal challenge and minimal risk to vehicles. Club safety equipment is mandatory for club members; it is not mandatory for non-members although it is recommended for vehicles once their drivers have participated in one or two trips. All open or soft-top vehicles must have a roll bar or roll cage.

Shiny 4x4:

Description: More difficult family trips, for shiny wagons and drivers *with some experience* who want more challenge and don't mind minor bush marks etc on their vehicles.

Drivers: Must have some experience, particularly important are experience in stopping, failed hill climbs, steep descents and sidelings. Club members must have completed CCVC Driver Training and participated in at least 2 Family 4X4 trips after becoming a member.

Vehicles: Vehicles must have mud tyres, tow hooks and all the required equipment per the club's document "Vehicle Safety & Equipment Inspections". This applies to all vehicles on the trip.

Club 4x4:

Description: Challenging trips, for experienced drivers. There will be steep and challenging terrain, modestly deep water and mud, likelihood of bush marks.

Drivers: Must have experience beyond that required for Shiny 4x4 trips, including water crossings and vehicle recovery. Club members must have participated in at least 2 Shiny 4X4 trips.

Vehicles: Must have mud tyres, tow hooks and all the required equipment per the club's document "Vehicle Safety & Equipment Inspections". This applies to all vehicles on the trip. Accessories such as high-lift jacks, externally mounted spare tyre, bush bars and multiple jacking points are of advantage. Winches are often particularly useful. Generally a short wheelbase vehicle is better suited for the tight tracks.

Hard Yakka:

Description: Difficult trips with very challenging terrain and surfaces, where winching, digging, and vehicle damage are all a possibility!

Drivers: Experienced drivers only, must have approval of Trip Leader. Club members must have participated in at least 3 Club 4X4 trips.

Vehicles: As per the Club 4x4 category. In addition, a roll-bar or roll-cage is recommended for all vehicles on Hard Yakka trips. Often a winch is mandatory on a Hard Yakka trip; this will be specified on the Trip Information Sheet

Date	Name	Organiser	Category	Place
October 2016				
Saturday 8th	CCVC Training Day for Prospective Members - Bookings Closed	Morris Jury	Family Shiny	Orongorongo area
Sunday 9th	Akatarawa with Ian G - Book with Ian ipgroom@xtra.co.nz	Ian Groom	Family Shiny	Akatarawa Forest
Monday 10th	Upper Hutt City Council Sunset Trip - Club Vehicles only	Ralph Dobson	Shiny 4X4	Mt Climie
Wednesday 12th	CCVC Club Night - 7:30pm, Petone Working Mens Club, Udy St, Petone - Visitors Welcome.	Neil Blackie	Meeting - 19:30	Petone Working Men's Club, Udy St
Sunday 16th	Club Champs	Brent Samson	Shiny 4X4 / Club 4X4	-tba-
Saturday 22nd	A HARD Akers trip with DD - Bookings Required - Members of other clubs welcome.	Dave De Martin	Club 4X4	Akatarawa Forest
Saturday 22nd	McKenzie Trail Recce - Limited Numbers - Bookings Essential	Grant Purdie	Club 4X4	Foxton Beach - McKenzie Trail
Sunday 23rd	McKenzie Trail with Possible extra challenges - Bookings essential	Ian Dixon	Shiny 4X4 / Club 4X4	Foxton Beach - McKenzie Trail
Monday 24th	LABOUR DAY HOLIDAY	-tba-	Event	-tba-
Wednesday 26th	CCVC Committee Meeting	Neil Blackie	Meeting - 19:30	-tba-
Saturday 29th	Orongorongo Monthly Trip - Book with Phil 04 970 3126 or 0275 456 590	Phil Green	Family Shiny	Orongorongo area
November 2016				
Wednesday 9th	CCVC Club Night - 7:30pm, Petone Working Mens Club, Udy St, Petone - Visitors Welcome.	Neil Blackie	Meeting - 19:30	-tba-
Saturday 12th	Akatarawa Forest with Frank A - Book with Frank (francis.a@orcon.net.nz)	Frank Allan	Family Shiny	Akatarawa Forest
Saturday 12th	Odolins Road with DD (to the Hut and beyond) - Book with DD	Dave De Martin	Club 4X4	Odlin's Road
Saturday 19th	South Coast Cleanup	Barry Insull	Shiny 4X4	Wellington South Coast/Red Rocks, Long Gully and beyond
Sunday 27th	Club Champs	Brent Samson	Shiny 4X4 / Club 4X4	-tba-
Sunday 27th	Orongorongo Monthly Trip - Book with Morris (04) 566 - 6197	Morris Jury	Family Shiny	Orongorongo area
Wednesday 30th	CCVC Committee Meeting	Neil Blackie	Meeting - 19:30	-tba-
December 2016				
Sunday 4th	Akatarawa with Graeme - Book with Graeme (04) 5267636	Graeme Millard	Family Shiny	Akatarawa Forest
Wednesday 14th	CCVC Club Night - 7:30pm, Petone Working Mens Club, Udy St, Petone - Visitors Welcome.	Neil Blackie	Meeting - 19:30	-tba-
Saturday 17th	Kids Christmas Run - Details to be confirmed	Morris Jury	Family Shiny	
Wednesday 28th	CCVC Committee Meeting	Neil Blackie		